



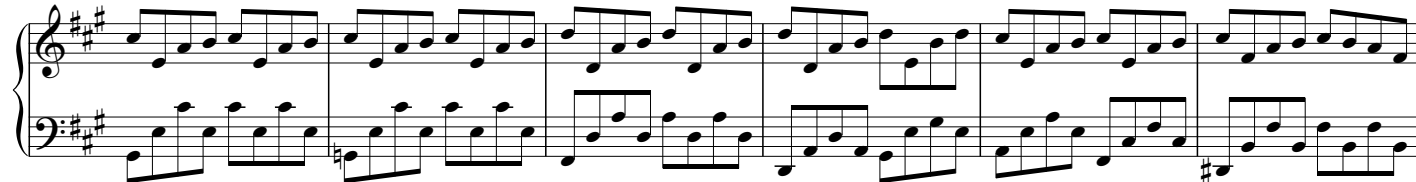
Jingle Bells

(First Version)

Arranged by Polly Bekasova

Allegro

The musical score for "Jingle Bells" is presented in a two-staff format, with the right hand (treble clef) and left hand (bass clef). The key signature is one sharp (F#), and the time signature is 4/4. The tempo is marked "Allegro". The score is divided into measures, with measure numbers 7, 13, 19, 25, 31, 37, and 43 indicated at the start of their respective systems. The melody in the right hand is characterized by eighth-note patterns, while the left hand provides a steady accompaniment of quarter notes. The piece concludes with a "rit." (ritardando) marking in the final measure.



94

100

106

112

118

124

130

134

rit.

8va

8

©RoadToVirtuosity.com