



# Come, Christians, Join To Sing

(Advanced Piano)

Arranged by  
Polly Bekasova



21

Measures 21-24 of a piano piece in G major. The right hand features a melody of eighth and quarter notes, while the left hand plays a steady eighth-note accompaniment. Measure 23 contains a whole rest in the right hand.

25

Measures 25-28 of the piano piece. The right hand continues the melodic line, and the left hand maintains the eighth-note accompaniment. Measure 28 ends with a double bar line.

29

Measures 29-32 of the piano piece. The right hand melody continues, with a whole rest in measure 31. The left hand accompaniment remains consistent.

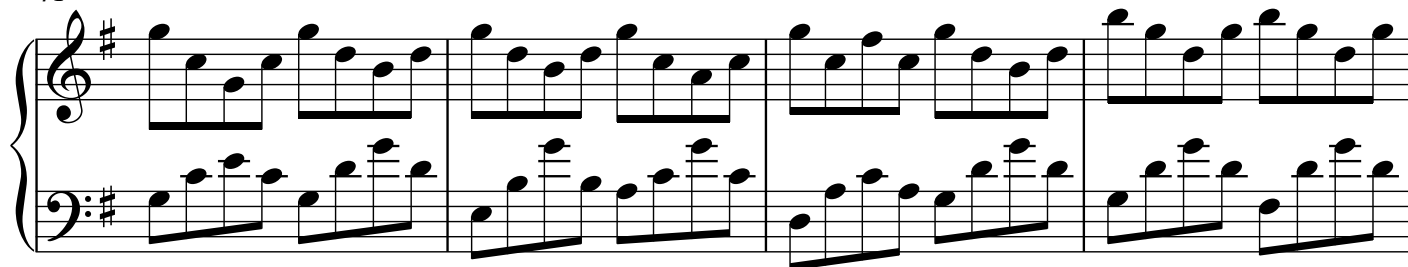
33

Measures 33-36 of the piano piece. The right hand melody continues, with a whole rest in measure 34. The left hand accompaniment remains consistent.

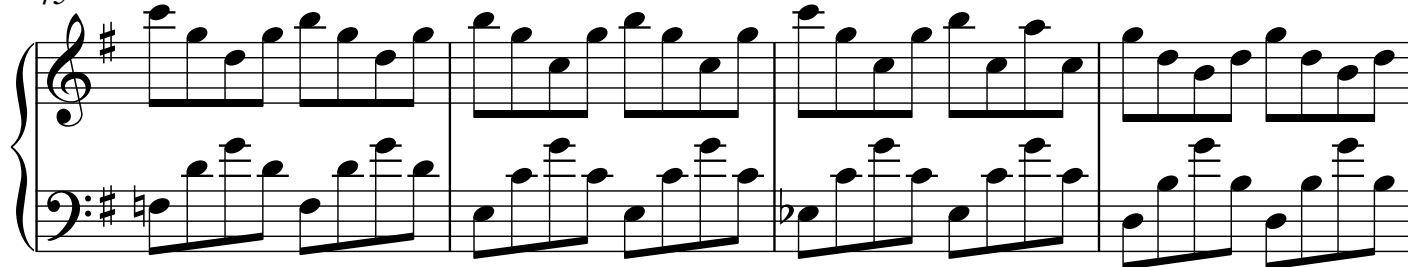
37

Measures 37-40 of the piano piece. The right hand melody continues, with a whole rest in measure 38. The left hand accompaniment remains consistent.

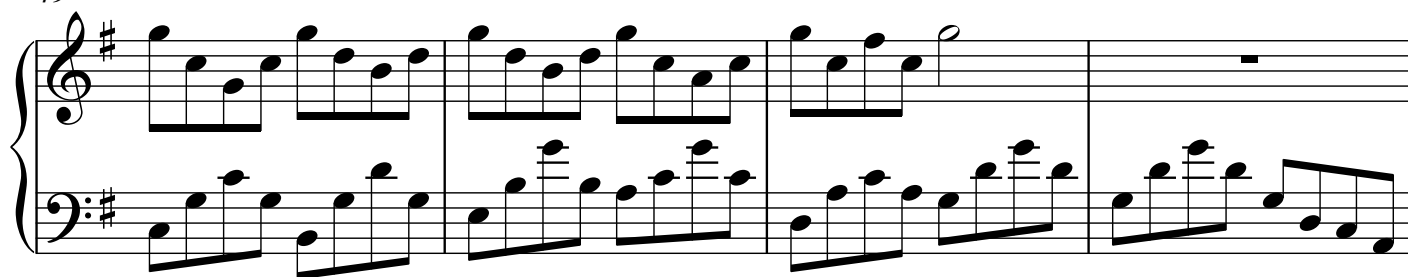
41



45



49



53



56



60

Measures 60-62 of a piano piece in G major. Measure 60 features a complex texture with multiple beamed eighth notes in the right hand and a descending eighth-note line in the left hand. Measure 61 continues with similar rhythmic patterns. Measure 62 concludes the system with a final chord in the right hand and a sustained note in the left hand.

63

Measures 63-65. Measure 63 shows a shift in the right-hand melody with more frequent rests. Measure 64 features a descending eighth-note line in the left hand. Measure 65 ends with a sustained chord in the right hand and a descending eighth-note line in the left hand.

66

Measures 66-68. Measure 66 begins with a rest in the right hand. Measure 67 features a descending eighth-note line in the left hand. Measure 68 concludes with a sustained chord in the right hand and a descending eighth-note line in the left hand.

69

Measures 69-71. Measure 69 features a descending eighth-note line in the left hand. Measure 70 continues with similar patterns. Measure 71 concludes with a sustained chord in the right hand and a descending eighth-note line in the left hand.

72

Measures 72-74. Measure 72 features a sustained chord in the right hand and a descending eighth-note line in the left hand. Measure 73 continues with similar patterns. Measure 74 concludes with a sustained chord in the right hand and a descending eighth-note line in the left hand.