



# Deck The Halls

(First Version)

Arranged by Polly Bekasova

**Allegro**

Measures 1-4 of the piano introduction. The right hand features a melody of eighth notes, while the left hand plays a steady eighth-note accompaniment. The key signature has one flat (B-flat), and the time signature is 4/4.

Measures 5-8 of the piano introduction. The right hand continues the eighth-note melody, and the left hand maintains the eighth-note accompaniment. The key signature has one flat (B-flat), and the time signature is 4/4.

Measures 9-12 of the piano introduction. The right hand features a melody of eighth notes, while the left hand plays a steady eighth-note accompaniment. The key signature has one flat (B-flat), and the time signature is 4/4.

Measures 13-16 of the piano introduction. The right hand features a melody of eighth notes, while the left hand plays a steady eighth-note accompaniment. The key signature has one flat (B-flat), and the time signature is 4/4.

Measures 17-20 of the piano introduction. The right hand features a melody of eighth notes, while the left hand plays a steady eighth-note accompaniment. The key signature has one flat (B-flat), and the time signature is 4/4.

2  
21

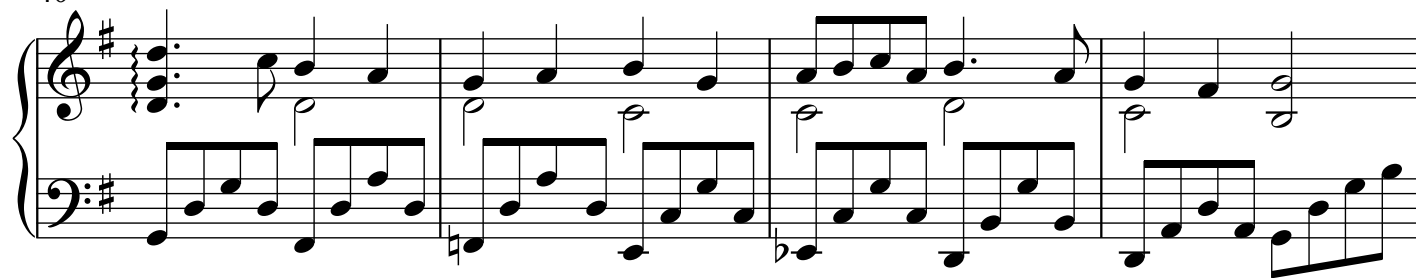
25

29

33 (8)

36

40



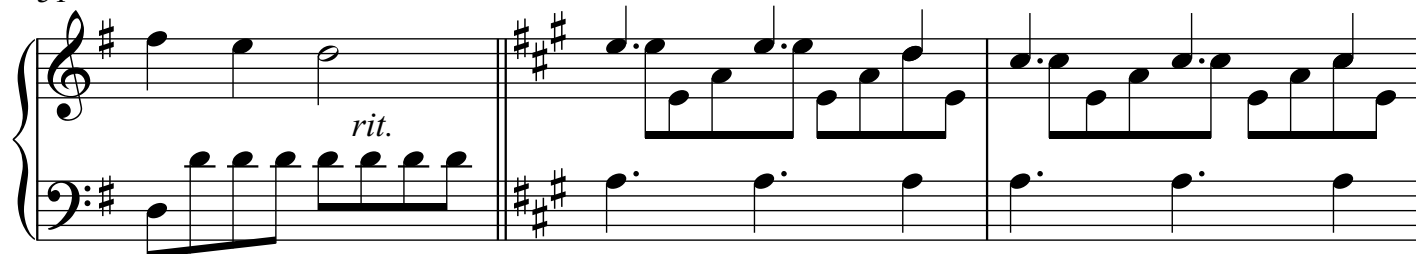
44



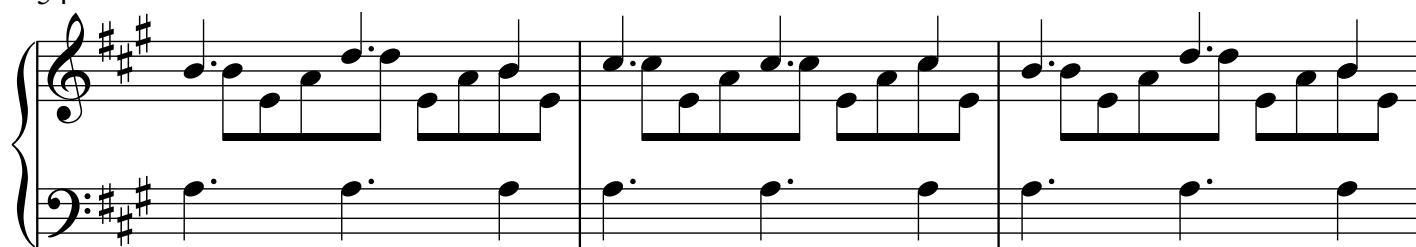
48

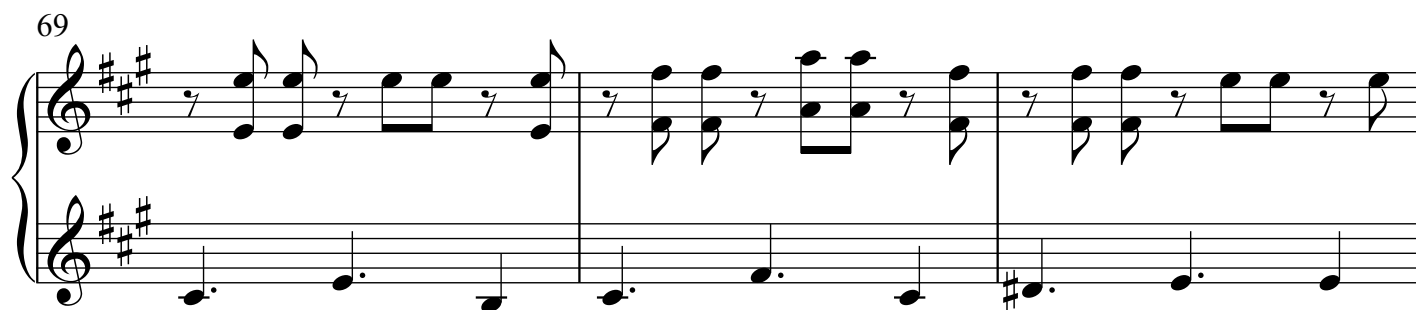
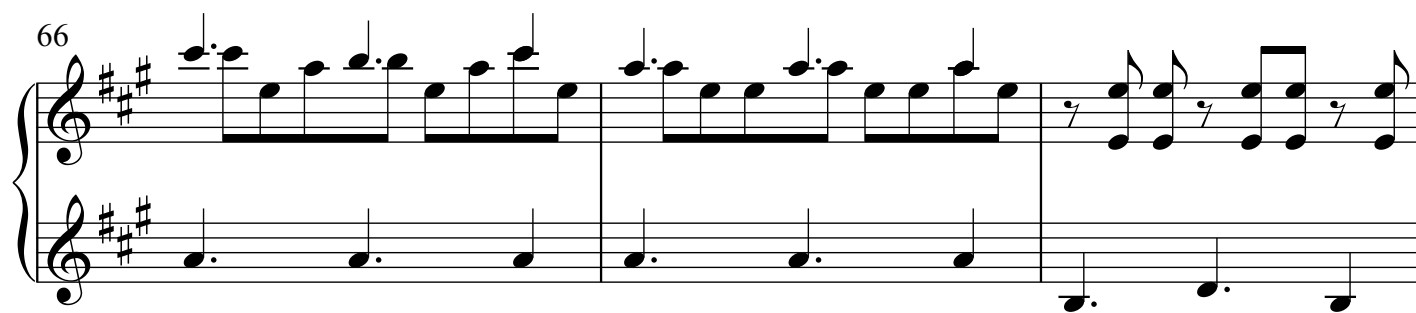
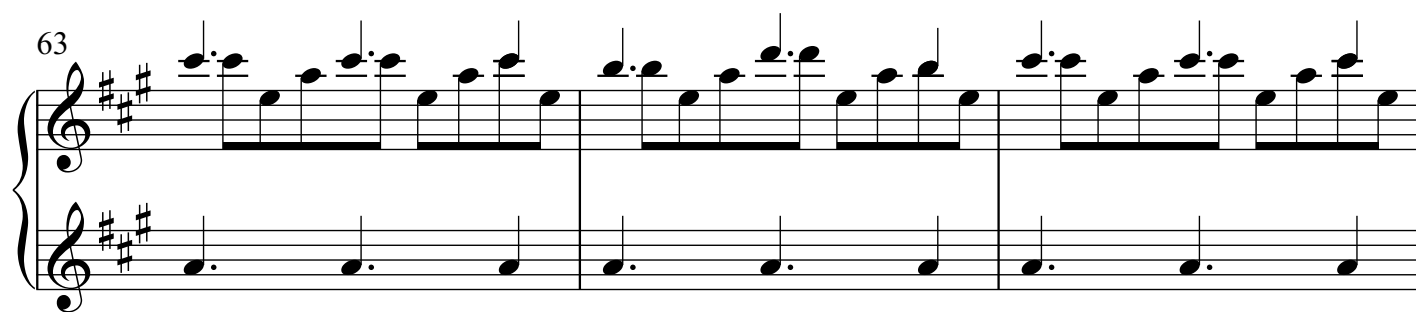
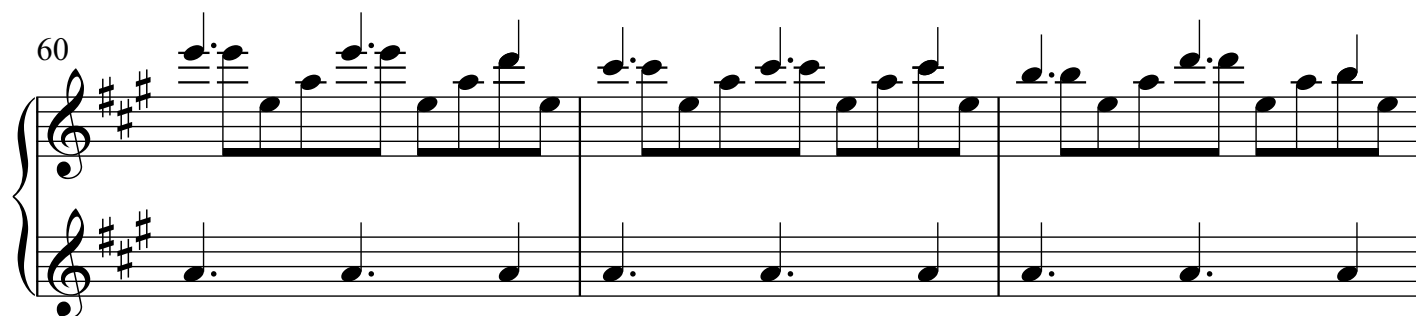
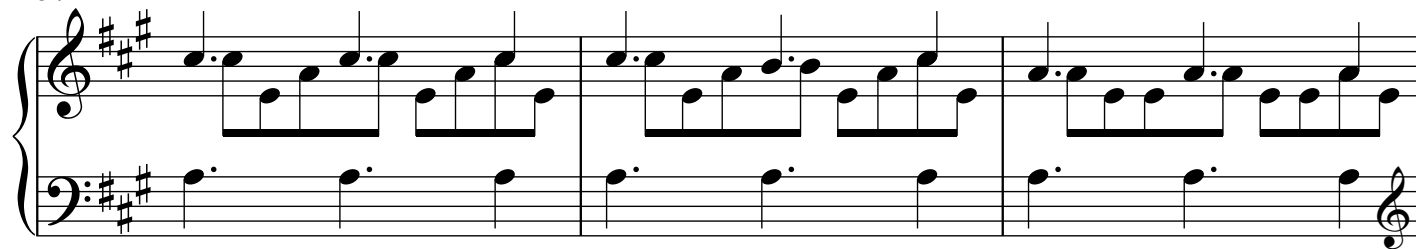


51



54





72 *rit.* *a tempo*

76

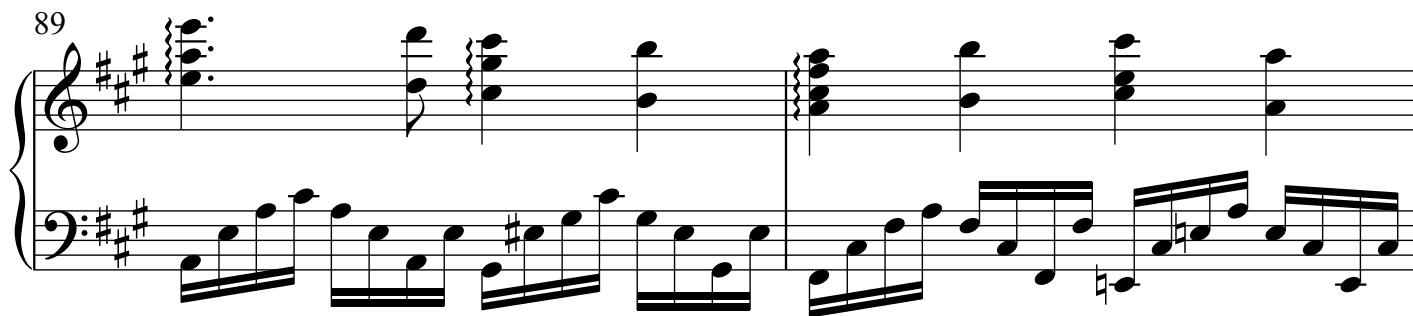
79

82

85 *8va* *rit.*

6 **Andante**

89



91

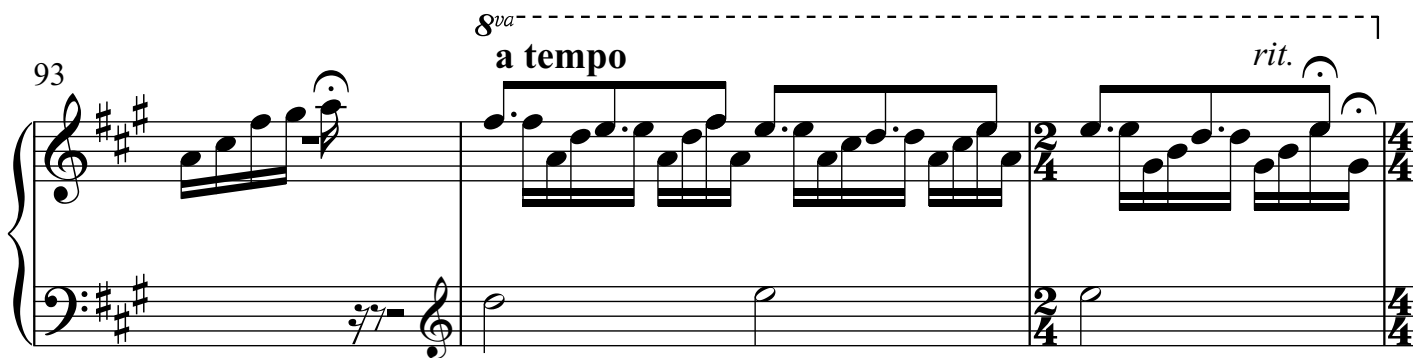


93

8va

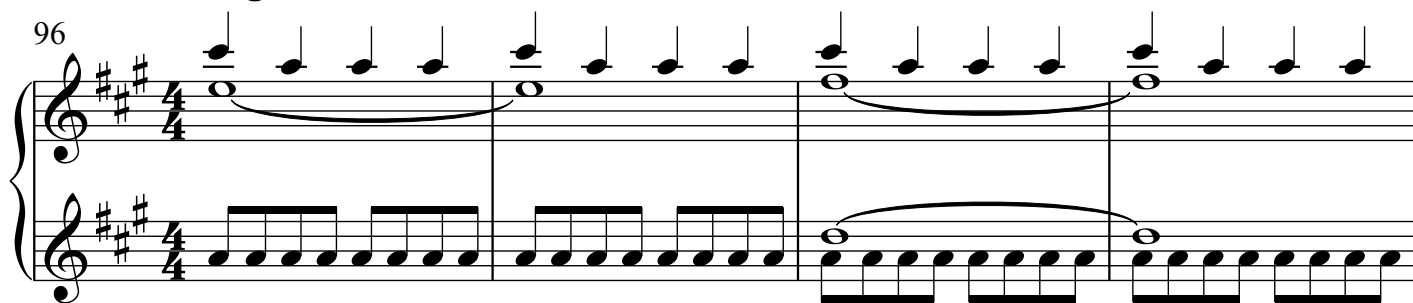
**a tempo**

*rit.*



**Allegro**

96



100

