



# Deck The Halls

(Second Version)

Arranged by Polly Bekasova

**Allegro**

Measures 1-5 of the piano arrangement. The music is in 4/4 time with a key signature of one flat (B-flat). The right hand plays a melody starting with a dotted quarter note, while the left hand provides a bass line with eighth and quarter notes.

Measures 6-10. Measure 6 begins with a repeat sign. The right hand continues the melody, and the left hand features a more active bass line with eighth notes and chords. Measure 10 includes a triplet of eighth notes in the right hand.

Measures 11-14. The right hand melody continues with eighth notes and quarter notes. The left hand features a consistent eighth-note bass line with occasional chords. Measure 14 ends with a quarter rest in the right hand.

Measures 15-18. Measures 15 and 16 feature a triplet of eighth notes in the right hand. Measure 17 contains a key signature change to two sharps (F# and C#) for two measures. The right hand plays a series of eighth-note chords, while the left hand continues with a steady eighth-note bass line.

Measures 19-22. The key signature returns to one flat. The right hand melody consists of quarter and eighth notes. The left hand continues with a steady eighth-note bass line. The piece concludes in measure 22 with a final chord in both hands.

23

Measures 23-26 of a piano piece. Measure 23 starts with a treble clef, a key signature of one flat (B-flat), and a 2/4 time signature. The right hand plays a sequence of eighth and sixteenth notes, while the left hand plays a bass line with eighth notes and rests. Measure 24 continues the pattern. Measure 25 features a double bar line and a key signature change to one sharp (F#). The right hand plays chords, and the left hand plays a steady eighth-note accompaniment. Measure 26 continues the eighth-note accompaniment in the left hand.

27

Measures 27-30 of a piano piece. Measure 27 starts with a treble clef, a key signature of one sharp (F#), and a 2/4 time signature. The right hand plays a sequence of eighth and sixteenth notes, while the left hand plays a bass line with eighth notes and rests. Measure 28 continues the pattern. Measure 29 features a double bar line and a key signature change to one sharp (F#). The right hand plays chords, and the left hand plays a steady eighth-note accompaniment. Measure 30 continues the eighth-note accompaniment in the left hand.

31

Measures 31-34 of a piano piece. Measure 31 starts with a treble clef, a key signature of one sharp (F#), and a 2/4 time signature. The right hand plays a sequence of eighth and sixteenth notes, while the left hand plays a bass line with eighth notes and rests. Measure 32 continues the pattern. Measure 33 features a double bar line and a key signature change to one sharp (F#). The right hand plays chords, and the left hand plays a steady eighth-note accompaniment. Measure 34 continues the eighth-note accompaniment in the left hand.

35

Measures 35-38 of a piano piece. Measure 35 starts with a treble clef, a key signature of one sharp (F#), and a 2/4 time signature. The right hand plays a sequence of eighth and sixteenth notes, while the left hand plays a bass line with eighth notes and rests. Measure 36 continues the pattern. Measure 37 features a double bar line and a key signature change to one sharp (F#). The right hand plays chords, and the left hand plays a steady eighth-note accompaniment. Measure 38 continues the eighth-note accompaniment in the left hand.

39

Measures 39-42 of a piano piece. Measure 39 starts with a treble clef, a key signature of one sharp (F#), and a 2/4 time signature. The right hand plays a sequence of eighth and sixteenth notes, while the left hand plays a bass line with eighth notes and rests. Measure 40 continues the pattern. Measure 41 features a double bar line and a key signature change to two sharps (F# and C#). The right hand plays chords, and the left hand plays a steady eighth-note accompaniment. Measure 42 continues the eighth-note accompaniment in the left hand.

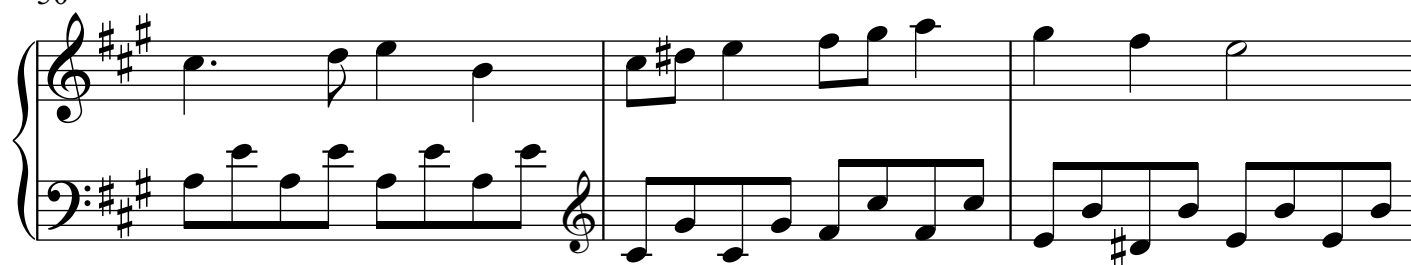
42



46



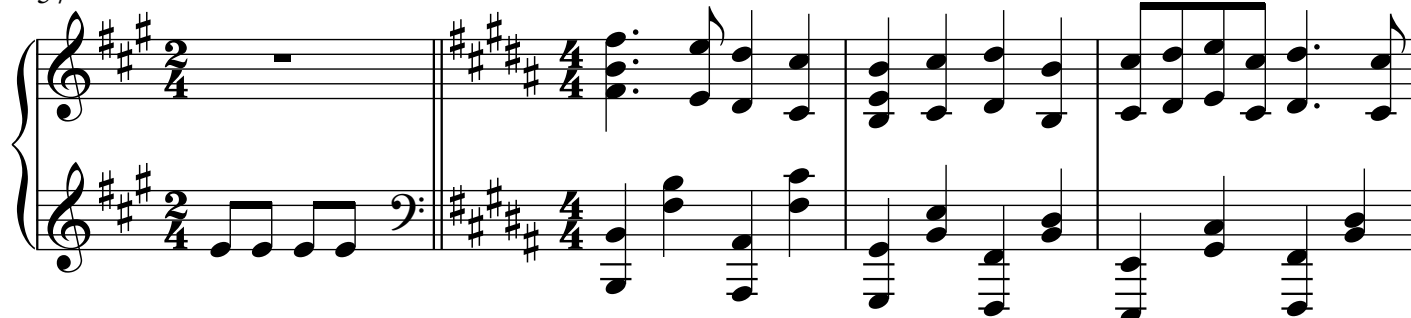
50



53



57



61

A musical score for the song 'The Rose Tree'. It features a treble and bass staff with a key signature of three sharps (F#, C#, G#) and a common time signature. The melody is written in the treble staff, and the accompaniment is in the bass staff. The piece consists of five measures. The first measure has a treble staff with a whole note chord (F#4, C#5, G#4) and a bass staff with a whole note chord (F#2, C#3, G#2). The second measure has a treble staff with a half note (F#4), a quarter note (C#5), and a whole note (G#4), and a bass staff with a half note (F#2), a quarter note (C#3), and a whole note (G#2). The third measure has a treble staff with a half note (F#4), a quarter note (C#5), and a whole note (G#4), and a bass staff with a half note (F#2), a quarter note (C#3), and a whole note (G#2). The fourth measure has a treble staff with a half note (F#4), a quarter note (C#5), and a whole note (G#4), and a bass staff with a half note (F#2), a quarter note (C#3), and a whole note (G#2). The fifth measure has a treble staff with a half note (F#4), a quarter note (C#5), and a whole note (G#4), and a bass staff with a half note (F#2), a quarter note (C#3), and a whole note (G#2).

66

A musical score for the song 'The Rose Tree'. It features a treble and bass staff with a key signature of three sharps (F#, C#, G#) and a common time signature. The melody is in the treble staff, and the accompaniment is in the bass staff. The music is written in a simple, folk-like style. The title 'The Rose Tree' is written in a decorative font at the top right.

70

A musical score for the song "The Rose Tree". The score is written for voice and piano. The key signature is D major (two sharps: F# and C#). The time signature is 4/4. The music consists of 8 measures. The vocal line is in the treble clef, and the piano accompaniment is in the bass clef. The piano part features a steady eighth-note accompaniment in the left hand and chords in the right hand. The vocal line follows the melody of the song, with lyrics written below the notes.

75

A musical score for the song "The Rose Tree". The score is written for voice and piano. The key signature is D major (two sharps: F# and C#). The time signature is 4/4. The music is in common time. The score consists of two systems. The first system has a vocal line and a piano accompaniment. The vocal line starts with a whole note chord (D4, F#4, A4) and then a half note chord (D4, F#4, A4). The piano accompaniment starts with a whole note chord (D3, F#3, A3) and then a half note chord (D3, F#3, A3). The second system has a vocal line and a piano accompaniment. The vocal line starts with a whole note chord (D4, F#4, A4) and then a half note chord (D4, F#4, A4). The piano accompaniment starts with a whole note chord (D3, F#3, A3) and then a half note chord (D3, F#3, A3). The score ends with a double bar line.

80

8<sup>va</sup>-----

The musical score for 'The Rose Tree' is presented in two systems. The first system consists of a vocal melody in the treble clef and a piano accompaniment in the bass clef. The key signature is one sharp (F#), and the time signature is 4/4. The melody begins with a quarter note G4, followed by quarter notes A4, B4, and C5. The piano accompaniment features a series of beamed eighth notes in the right hand and a steady bass line in the left hand. The second system continues the melody and accompaniment, ending with a final cadence. The score is written in a clear, legible font, with standard musical notation including notes, rests, and bar lines.