

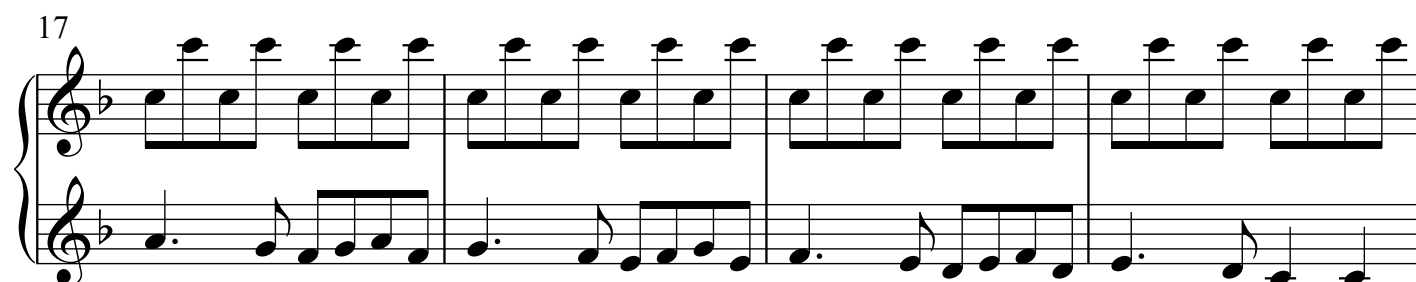
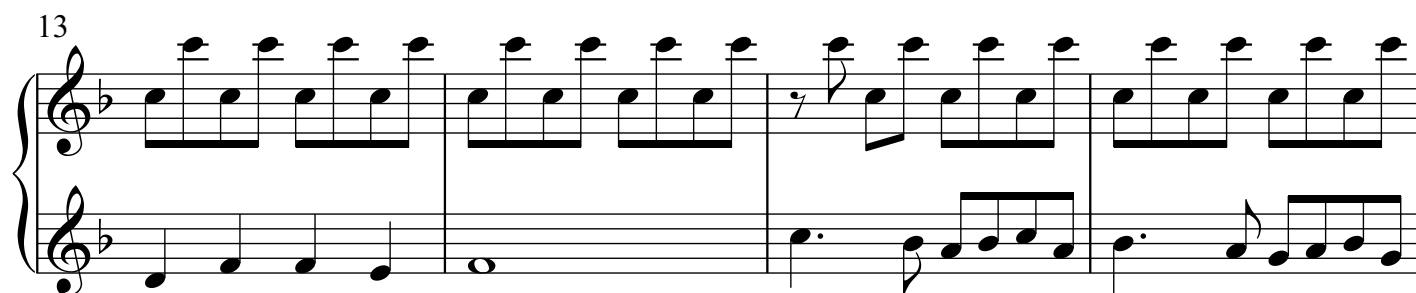
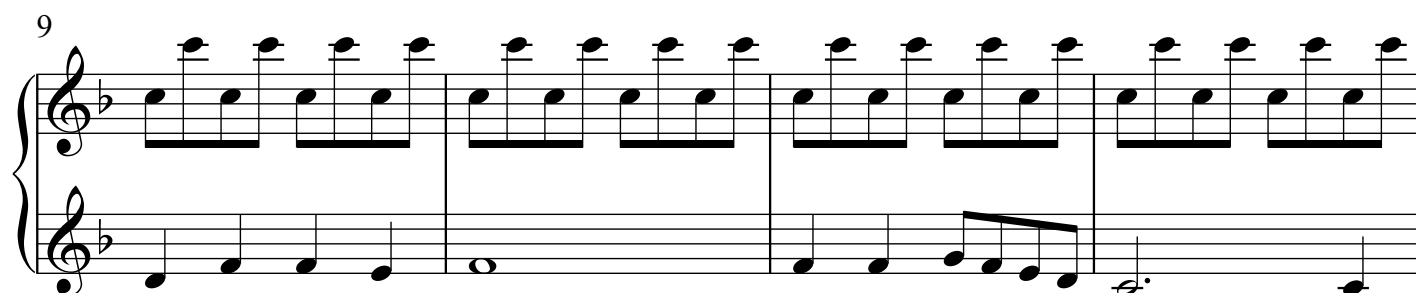
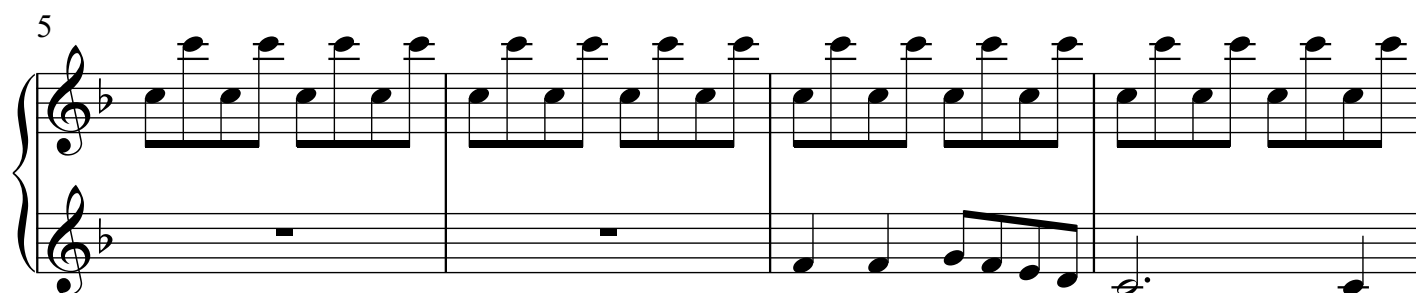
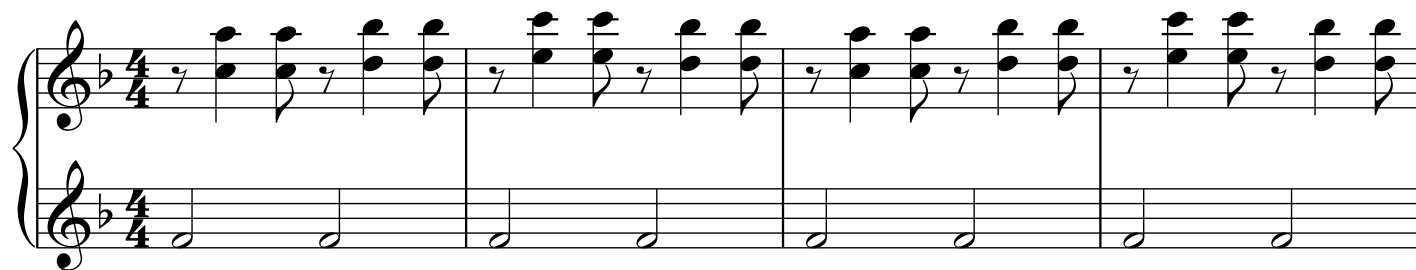


Ding Dong Merrily On High

(First Version)

Arranged by Polly Bekasova

Allegretto



2
21

25

29

33

37

40



44



48



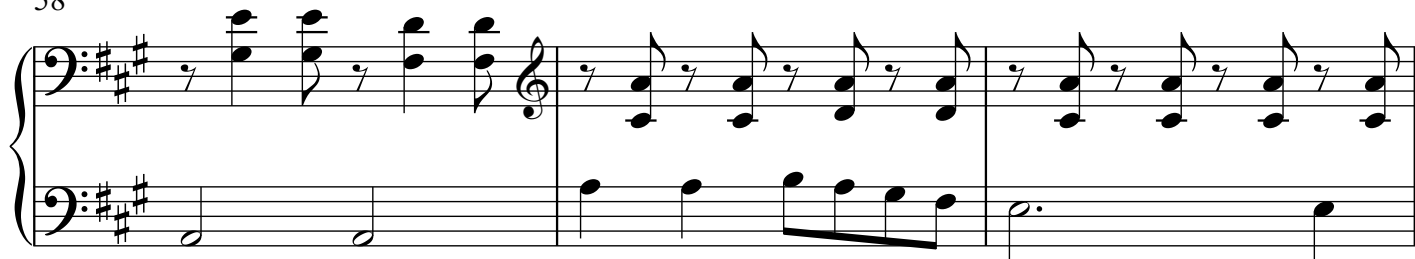
51



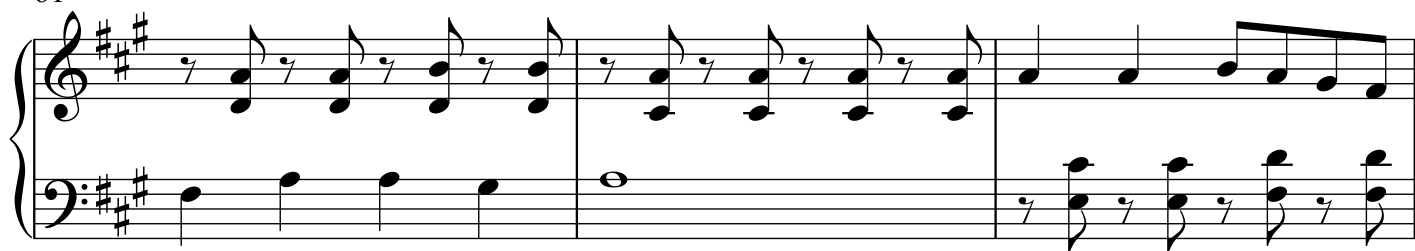
54



4
58



61



64



68



71



74

Measures 74-76 of a musical score in A major (three sharps). The piece is in 4/4 time. Measures 74 and 75 feature a treble clef with eighth-note chords and a bass clef with half notes. Measure 76 continues the treble clef pattern while the bass clef has whole notes.

77

Measures 77-80 of the musical score. Measure 77 has a bass clef with eighth-note chords and a treble clef with whole notes. Measures 78-80 continue with the bass clef playing eighth-note chords and the treble clef playing whole notes.

81

Measures 81-83 of the musical score. Measures 81 and 82 have a treble clef with eighth-note chords and a bass clef with eighth-note chords. Measure 83 continues the treble clef pattern while the bass clef has whole notes.

84

Measures 84-86 of the musical score. Measures 84 and 85 have a treble clef with eighth-note chords and a bass clef with eighth-note chords. Measure 86 continues the treble clef pattern while the bass clef has whole notes.

87

Measures 87-89 of the musical score. Measures 87 and 88 have a treble clef with eighth-note chords and a bass clef with eighth-note chords. Measure 89 features a treble clef with a half note and a bass clef with a half note, both marked with a fermata. The piece ends with a double bar line.