



Ding Dong Merrily On High

(Advanced Piano)

Arranged by
Michael Kravchuk

The sheet music is arranged in six systems, each with a grand staff (treble and bass clef). The key signature is one flat (B-flat) and the time signature is 4/4. The first system (measures 1-3) features a melody in the treble clef and a bass line in the bass clef. The second system (measures 4-6) includes a rapid ascending scale in the treble clef. The third system (measures 7-10) continues the melody and bass line. The fourth system (measures 11-14) features a more complex melody in the treble clef. The fifth system (measures 15-18) continues the melody and bass line. The sixth system (measures 19-22) concludes the piece with a final chord in the treble clef and a bass line.

23

Measures 23-26 of a musical score in B-flat major. The right hand features a melody of eighth notes, while the left hand plays a rhythmic accompaniment of eighth notes. The key signature has two flats (B-flat and E-flat).

27

Measures 27-30 of a musical score in B-flat major. The right hand features a melody of eighth notes, while the left hand plays a rhythmic accompaniment of eighth notes. The key signature has two flats (B-flat and E-flat).

31

Measures 31-34 of a musical score in B-flat major. The right hand features a melody of eighth notes, while the left hand plays a rhythmic accompaniment of eighth notes. The key signature has two flats (B-flat and E-flat).

35

Measures 35-37 of a musical score in B-flat major. The right hand features a melody of eighth notes, while the left hand plays a rhythmic accompaniment of eighth notes. The key signature has two flats (B-flat and E-flat).

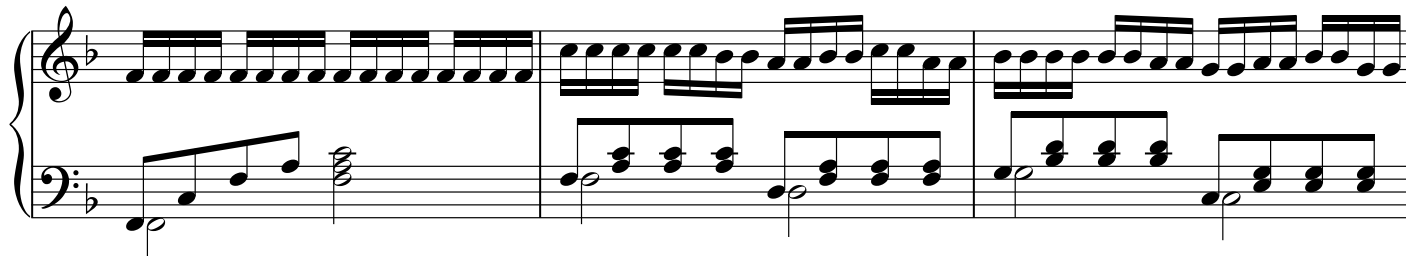
38

Measures 38-40 of a musical score in B-flat major. The right hand features a melody of eighth notes, while the left hand plays a rhythmic accompaniment of eighth notes. The key signature has two flats (B-flat and E-flat).

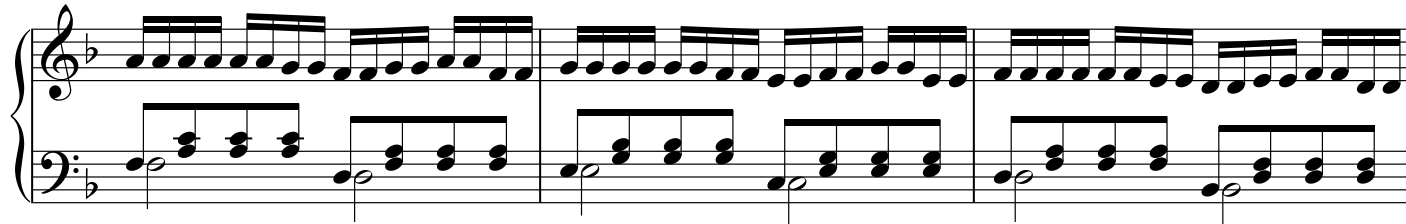
41



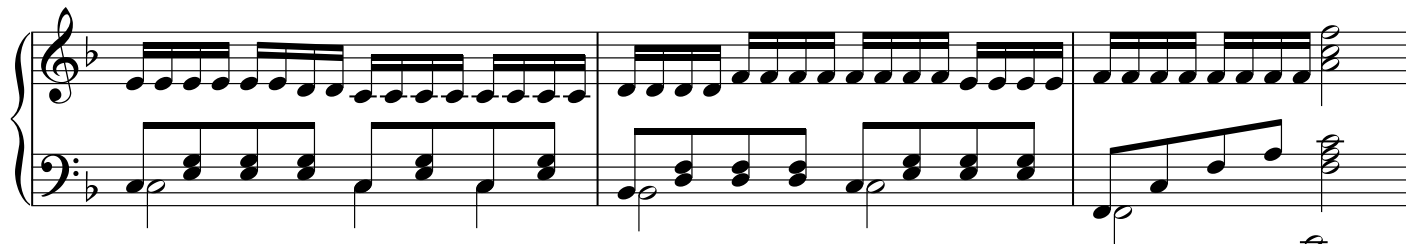
44



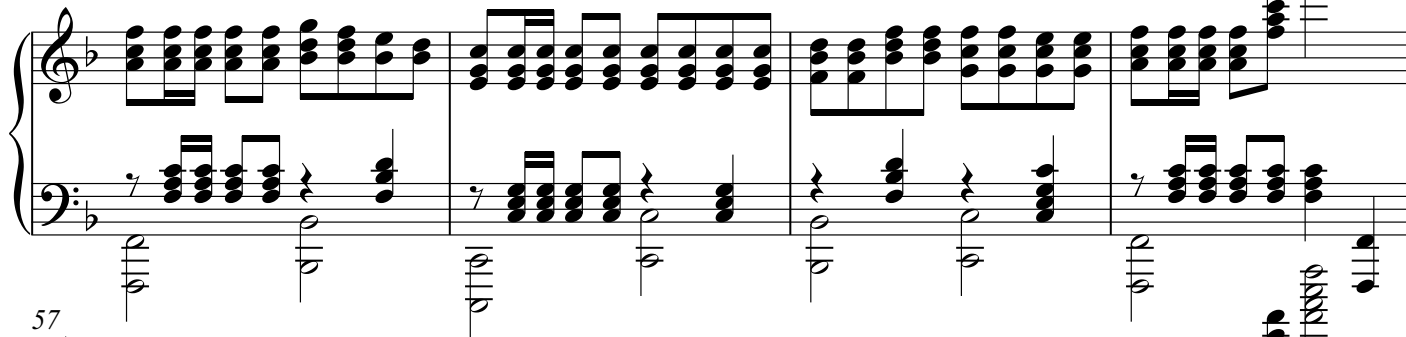
47



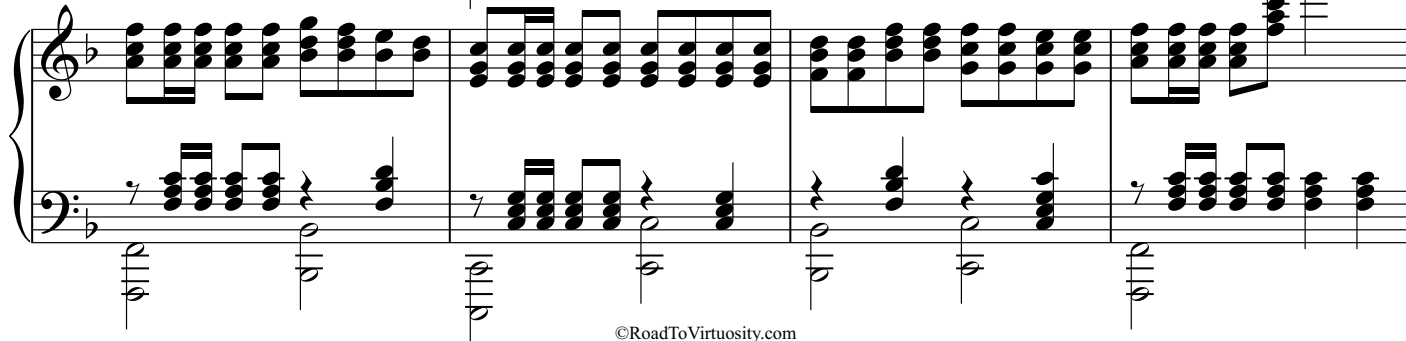
50



53



57



61

Chord symbols: $\text{F}^{\flat}7$, $\text{F}^{\flat}7$, $\text{F}^{\flat}7$, $\text{F}^{\flat}7$, $\text{F}^{\flat}7$, $\text{F}^{\flat}7$, $\text{F}^{\flat}7$, $\text{F}^{\flat}7$

65

Chord symbols: $\text{F}^{\flat}7$, $\text{F}^{\flat}7$, $\text{F}^{\flat}7$, $\text{F}^{\flat}7$, $\text{F}^{\flat}7$, $\text{F}^{\flat}7$, $\text{F}^{\flat}7$, $\text{F}^{\flat}7$

69

8va

Chord symbols: $\text{F}^{\flat}7$, $\text{F}^{\flat}7$, $\text{F}^{\flat}7$, $\text{F}^{\flat}7$, $\text{F}^{\flat}7$, $\text{F}^{\flat}7$, $\text{F}^{\flat}7$, $\text{F}^{\flat}7$

72

(8)

Chord symbols: $\text{F}^{\flat}7$, $\text{F}^{\flat}7$, $\text{F}^{\flat}7$, $\text{F}^{\flat}7$, $\text{F}^{\flat}7$, $\text{F}^{\flat}7$, $\text{F}^{\flat}7$, $\text{F}^{\flat}7$

75

(8)

Chord symbols: $\text{F}^{\flat}7$, $\text{F}^{\flat}7$, $\text{F}^{\flat}7$, $\text{F}^{\flat}7$, $\text{F}^{\flat}7$, $\text{F}^{\flat}7$, $\text{F}^{\flat}7$, $\text{F}^{\flat}7$