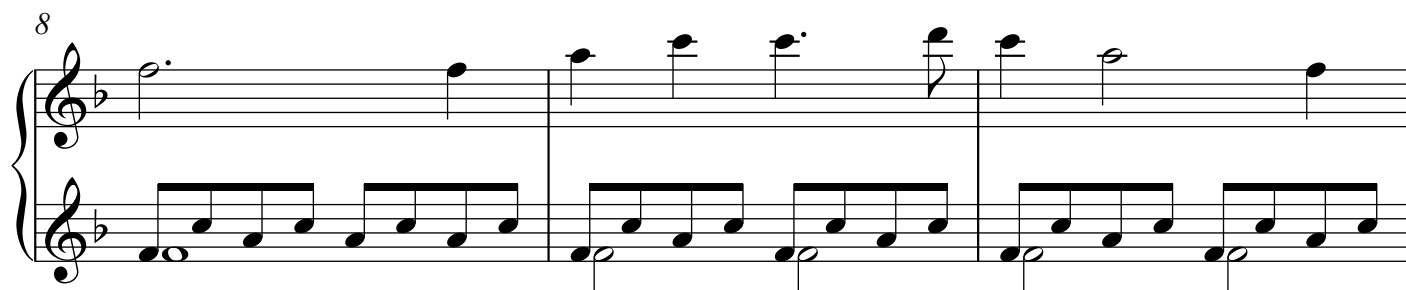
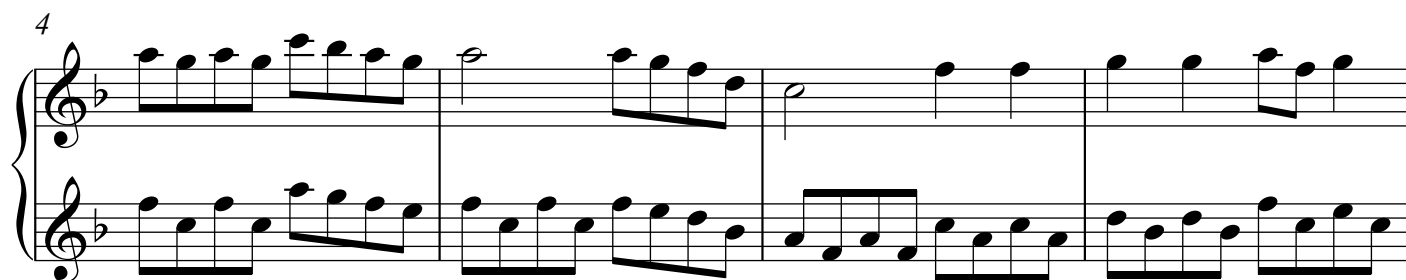




Go Tell It On The Mountain

(Advanced Piano)

Arranged by
Michael Kravchuk



17

Measures 17-20. Treble clef: Measure 17 has a whole rest. Measures 18-20 contain eighth-note runs. Bass clef: Continuous eighth-note runs across all four measures.

21

Measures 21-24. Treble clef: Measure 21 has a whole rest. Measures 22-24 contain eighth-note runs. Bass clef: Continuous eighth-note runs across all four measures.

25

Measures 25-28. Treble clef: Measures 25-26 have half notes. Measures 27-28 have eighth-note runs. Bass clef: Continuous eighth-note runs across all four measures.

29

Measures 29-32. Treble clef: Measures 29-30 have half notes. Measures 31-32 have eighth-note runs. Bass clef: Continuous eighth-note runs across all four measures.

33

Measures 33-36. Treble clef: Continuous half notes across all four measures. Bass clef: Continuous eighth-note runs across all four measures.

36

36 37 38

39

39 40 41 42

43

43 44 45 46

47

47 48 49 50 51

52

52 53 54 55 56

57

Measures 57-60. Treble and bass staves. Measure 59 has a repeat sign.

61

Measures 61-63. Treble and bass staves. Measure 63 has a repeat sign.

64

Measures 64-66. Treble and bass staves. Measure 64 has a repeat sign.

67

Measures 67-71. Treble and bass staves. Measure 71 has a repeat sign.

72

Measures 72-76. Treble and bass staves. Measure 76 has a repeat sign.