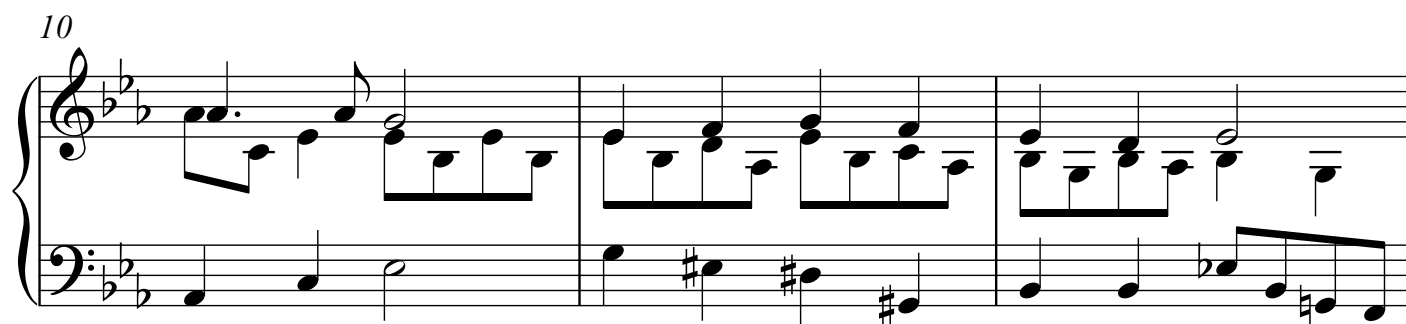
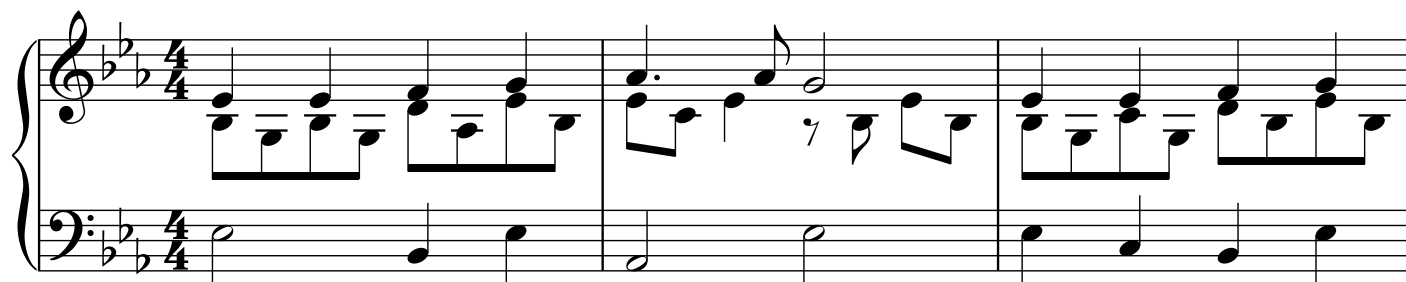




# Go To Dark Gethsemane

(Advanced Piano)

Arranged by  
Ivan Lohvin



*simile arp.*

13

Example 13

15

17

18

19

19

21

Example 10-10

23

Measures 23-24. Treble clef: Chords of F major (F-A-C) and D minor (D-F-A). Bass clef: Continuous eighth-note arpeggiated accompaniment.

25

Measures 25-28. Treble clef: Melodic lines with eighth notes and chords. Bass clef: Accompanying eighth notes and rests. Measure 28 features a triplet of eighth notes in the treble.

29

Measures 29-32. Treble clef: Melodic lines with eighth notes and chords. Bass clef: Accompanying eighth notes and rests. Measures 30-32 feature triplets of eighth notes in the treble.

33

Measures 33-36. Treble clef: Melodic lines with eighth notes and chords. Bass clef: Accompanying eighth notes and rests. Measures 34-36 feature triplets of eighth notes in the treble.

37

Measures 37-39. Treble clef: Melodic lines with eighth notes and chords. Bass clef: Accompanying eighth notes and rests. Measure 37 includes a trill in the treble. Measures 38-39 feature triplets of eighth notes in the treble.

40

8va

43

46

49

52