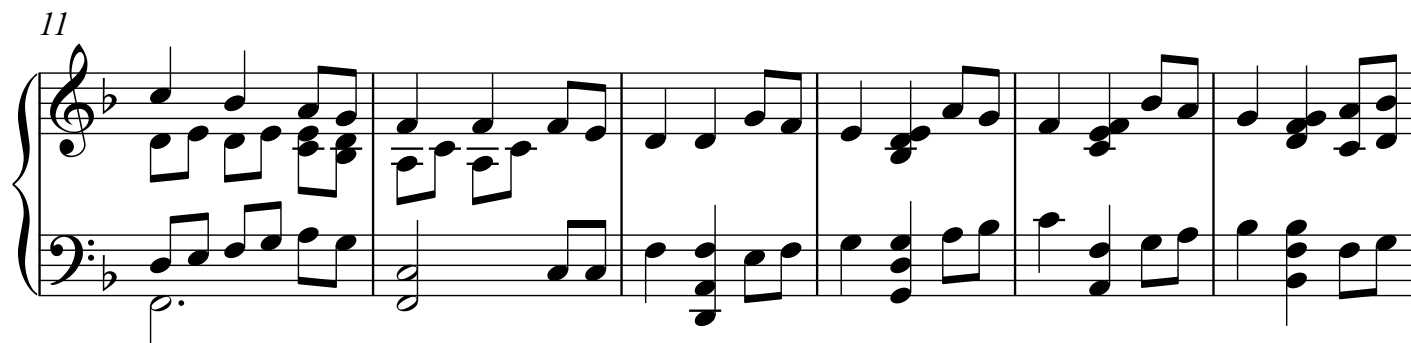
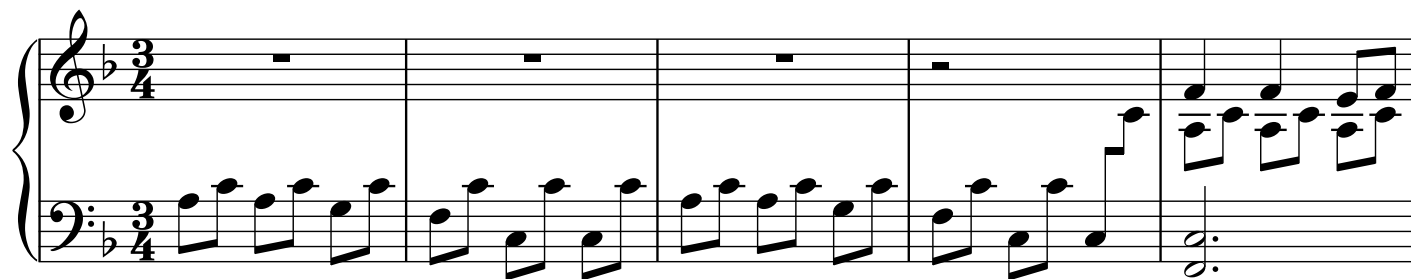




Infant Holy, Infant Lowly

(Advanced Piano)

Arranged by
Serafim Ivanov



2 22

Measures 22-25 of a musical score in B-flat major. Measure 22 features a treble staff with eighth-note chords and a bass staff with a half-note chord and a whole note. Measure 23 has a treble staff with a half note and a bass staff with a half note. Measure 24 has a treble staff with a sixteenth-note run and a bass staff with a half note. Measure 25 has a treble staff with a sixteenth-note run and a bass staff with a half note.

26

Measures 26-28 of a musical score in B-flat major. Measure 26 features a treble staff with a sixteenth-note run and a bass staff with a half note. Measure 27 has a treble staff with a sixteenth-note run and a bass staff with a half note. Measure 28 has a treble staff with a sixteenth-note run and a bass staff with a half note.

29

Measures 29-31 of a musical score in B-flat major. Measure 29 features a treble staff with a sixteenth-note run and a bass staff with a half note. Measure 30 has a treble staff with a sixteenth-note run and a bass staff with a half note. Measure 31 has a treble staff with a sixteenth-note run and a bass staff with a half note.

32

Measures 32-34 of a musical score in B-flat major. Measure 32 features a treble staff with a sixteenth-note run and a bass staff with a half note. Measure 33 has a treble staff with a sixteenth-note run and a bass staff with a half note. Measure 34 has a treble staff with a sixteenth-note run and a bass staff with a half note.

35

Measures 35-37 of a musical score in B-flat major. Measure 35 features a treble staff with a sixteenth-note run and a bass staff with a half note. Measure 36 has a treble staff with a sixteenth-note run and a bass staff with a half note. Measure 37 has a treble staff with a sixteenth-note run and a bass staff with a half note.

38

3

Measures 38-40 of a musical score. The piece is in B-flat major (two flats) and 3/4 time. Measure 38 features a complex piano accompaniment with sixteenth-note chords in the right hand and a simple bass line in the left hand. Measure 39 continues this pattern. Measure 40 shows a change in the piano part, with the right hand playing a series of chords and the left hand playing a single note. The system ends with a repeat sign.

41

Measures 41-43 of a musical score. The piece is in B-flat major (two flats) and 3/4 time. Measure 41 features a complex piano accompaniment with sixteenth-note chords in the right hand and a simple bass line in the left hand. Measure 42 continues this pattern. Measure 43 shows a change in the piano part, with the right hand playing a series of chords and the left hand playing a single note. The system ends with a repeat sign.

44

Measures 44-46 of a musical score. The piece is in B-flat major (two flats) and 3/4 time. Measure 44 features a complex piano accompaniment with sixteenth-note chords in the right hand and a simple bass line in the left hand. Measure 45 continues this pattern. Measure 46 shows a change in the piano part, with the right hand playing a series of chords and the left hand playing a single note. The system ends with a repeat sign.

47

Measures 47-50 of a musical score. The piece is in B-flat major (two flats) and 3/4 time. Measure 47 features a complex piano accompaniment with sixteenth-note chords in the right hand and a simple bass line in the left hand. Measure 48 continues this pattern. Measure 49 shows a change in the piano part, with the right hand playing a series of chords and the left hand playing a single note. Measure 50 shows a change in the piano part, with the right hand playing a series of chords and the left hand playing a single note. The system ends with a repeat sign.

51

Measures 51-54 of a musical score. The piece is in B-flat major (two flats) and 3/4 time. Measure 51 features a complex piano accompaniment with sixteenth-note chords in the right hand and a simple bass line in the left hand. Measure 52 continues this pattern. Measure 53 shows a change in the piano part, with the right hand playing a series of chords and the left hand playing a single note. Measure 54 shows a change in the piano part, with the right hand playing a series of chords and the left hand playing a single note. The system ends with a repeat sign.