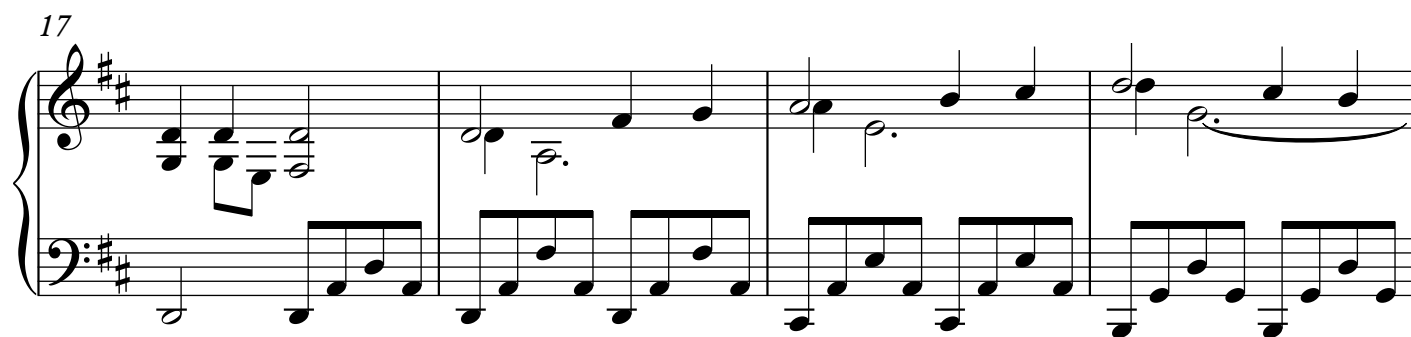
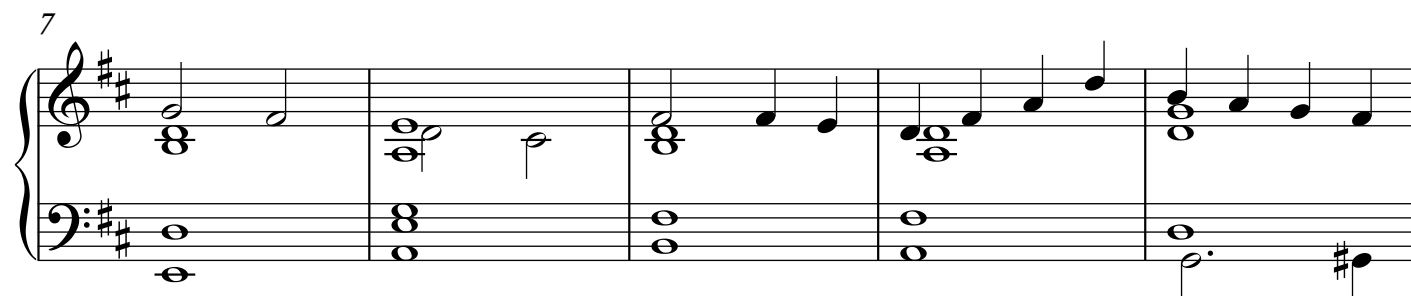
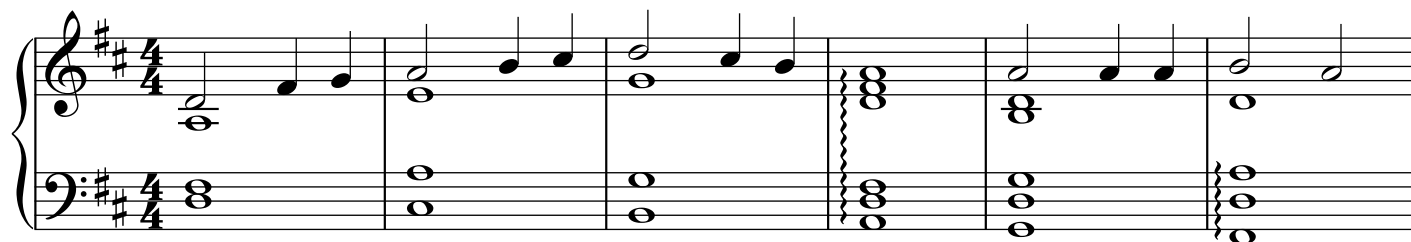




# Jesus Shall Reign

(Advanced Piano)

Arranged by  
Polly Bekasova



24

Measures 24-26 of a piano piece in D major. Measure 24 features a half note D4 in the right hand and a half note F#3 in the left hand. Measure 25 has a half note E4 in the right hand and a half note G#3 in the left hand. Measure 26 has a half note F#4 in the right hand and a half note A3 in the left hand.

27

Measures 27-30 of a piano piece in D major. Measure 27 has a half note G4 in the right hand and a half note B2 in the left hand. Measure 28 has a half note A4 in the right hand and a half note C3 in the left hand. Measure 29 has a half note B4 in the right hand and a half note D3 in the left hand. Measure 30 has a half note C5 in the right hand and a half note E2 in the left hand.

31

Measures 31-34 of a piano piece in D major. Measure 31 has a half note D5 in the right hand and a half note F#2 in the left hand. Measure 32 has a half note E5 in the right hand and a half note G#2 in the left hand. Measure 33 has a half note F#5 in the right hand and a half note A2 in the left hand. Measure 34 has a half note G5 in the right hand and a half note B1 in the left hand.

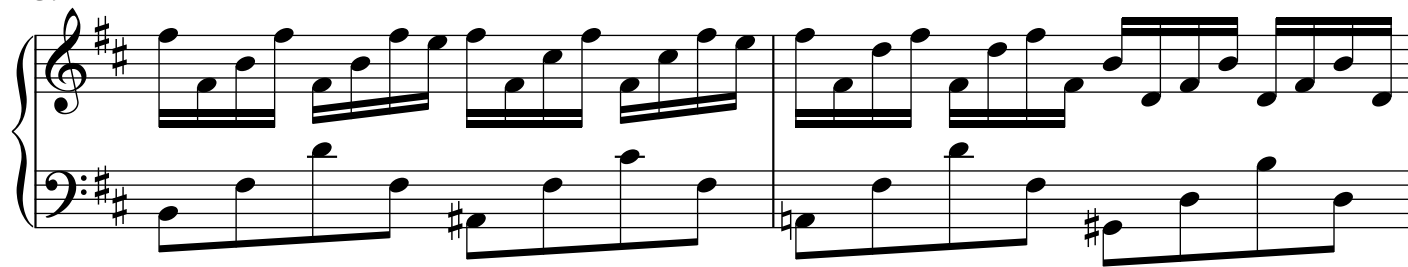
35

Measures 35-36 of a piano piece in D major. Measure 35 has a half note A4 in the right hand and a half note D3 in the left hand. Measure 36 has a half note B4 in the right hand and a half note E3 in the left hand.

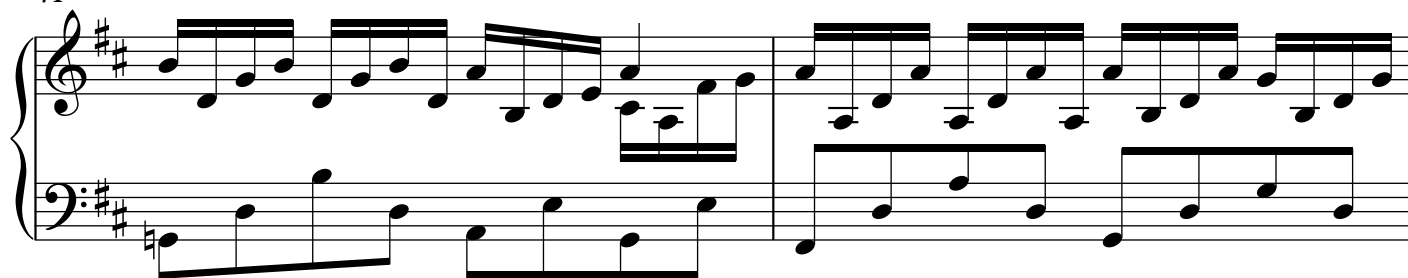
37

Measures 37-39 of a piano piece in D major. Measure 37 has a half note C5 in the right hand and a half note F#2 in the left hand. Measure 38 has a half note D5 in the right hand and a half note G#2 in the left hand. Measure 39 has a half note E5 in the right hand and a half note A2 in the left hand.

39



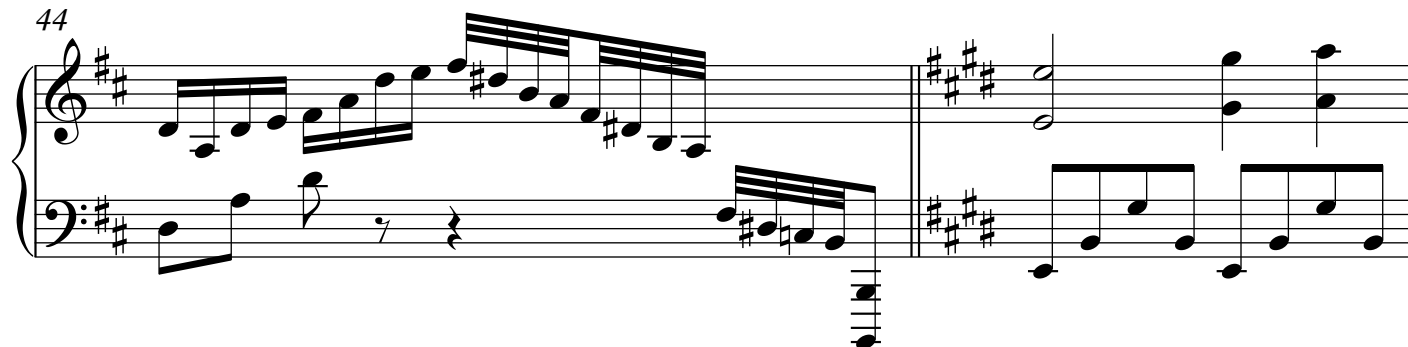
41



43



44



46



50

Measures 50-52 of a piano piece in A major. The right hand features a melody with dotted rhythms and eighth-note patterns, while the left hand provides a steady eighth-note accompaniment.

53

Measures 53-55. The right hand continues the melodic line with chords and eighth notes. The left hand maintains the eighth-note accompaniment, with some chromatic movement in the bass line.

56

Measures 56-58. Measure 57 includes a whole rest in the right hand. The left hand continues its eighth-note accompaniment.

59

Measures 59-62. Measures 60 and 61 feature a long, sustained chord in the right hand. The left hand continues the eighth-note accompaniment.

63

Measures 63-67. Measures 63-65 feature a complex texture with rapid sixteenth-note runs in both hands. The piece concludes in measure 67 with a final chord in the right hand and a whole rest in the left.