



# Jingle Bells

(Second Version)

Arranged by Polly Bekasova

**Allegro**

Measures 1-6 of the first system. The music is in 4/4 time with a key signature of one sharp (F#). The melody in the right hand consists of eighth and quarter notes, while the left hand provides a harmonic accompaniment with chords and single notes.

Measures 7-11 of the second system. The melody continues with various note values, including eighth and quarter notes. The left hand accompaniment features chords and moving lines.

Measures 12-16 of the third system. The melody includes some rests and longer note values. The left hand continues with a steady accompaniment.

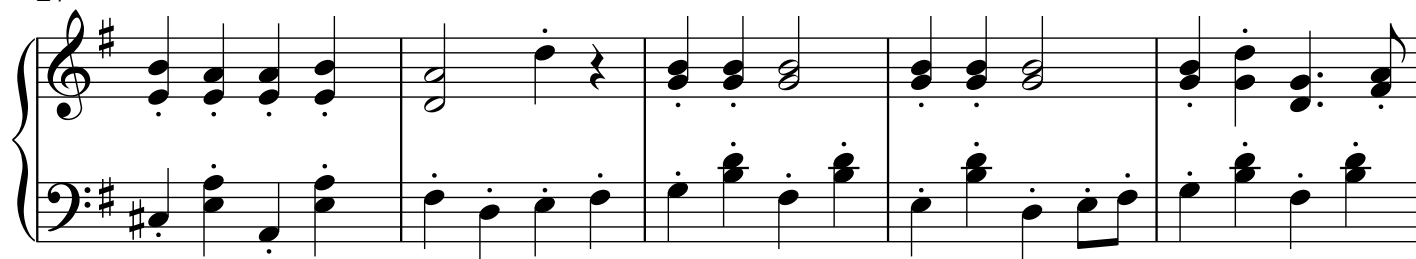
Measures 17-21 of the fourth system. The melody features several whole notes and rests. The left hand accompaniment includes chords and eighth notes.

2

22



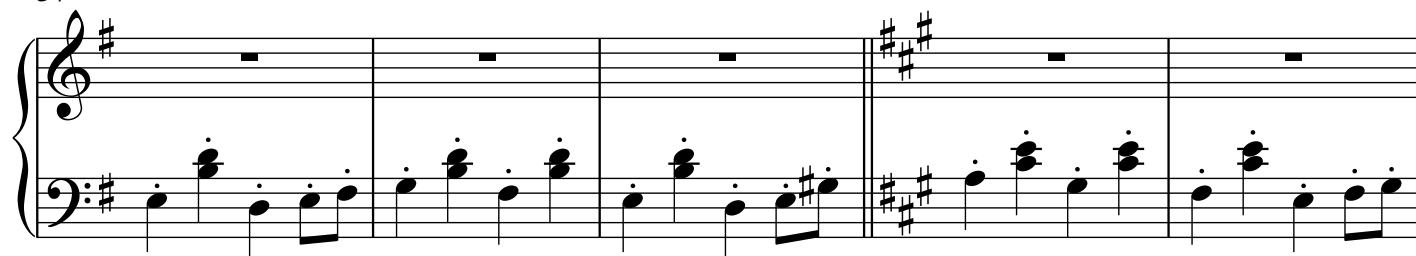
27



32



37



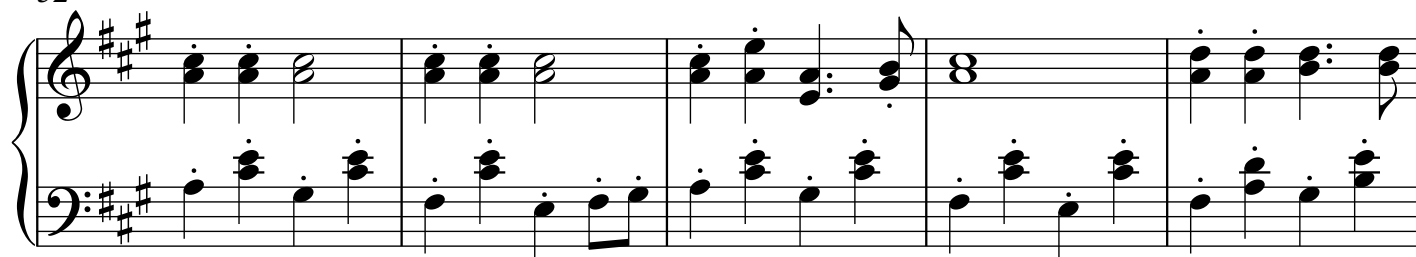
42



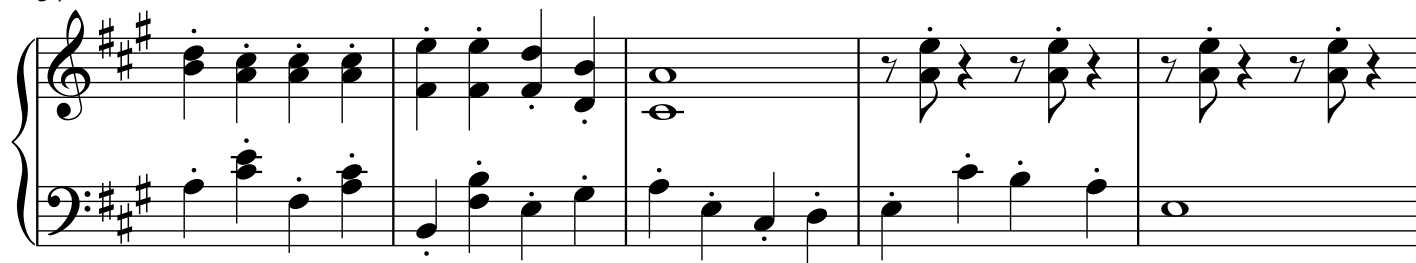
47



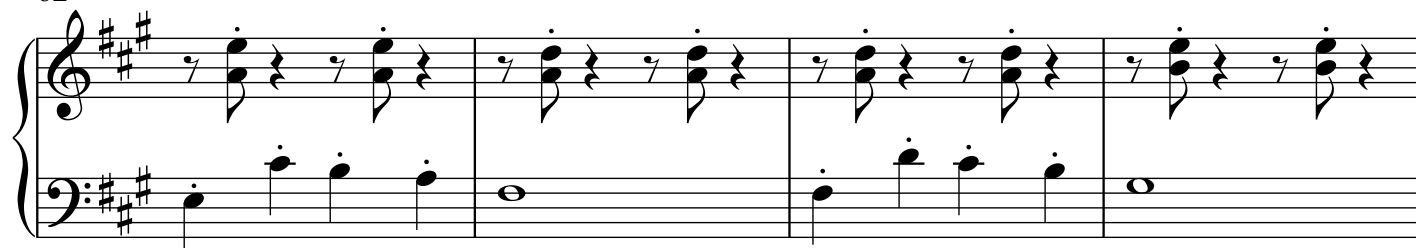
52



57



62



66

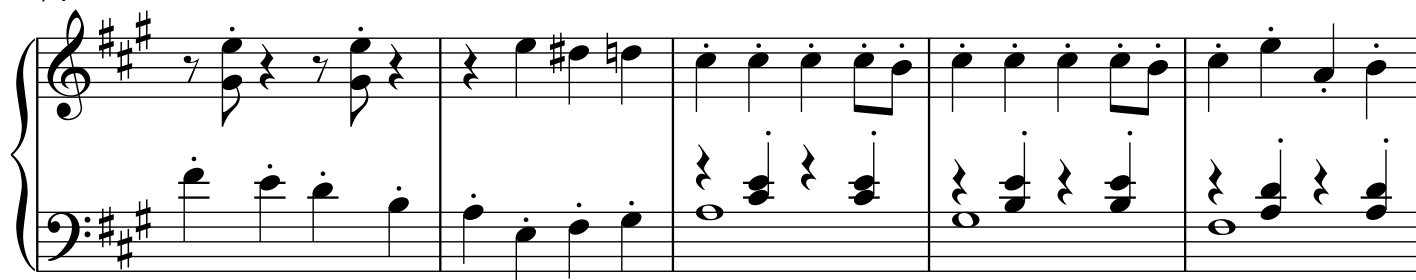


4

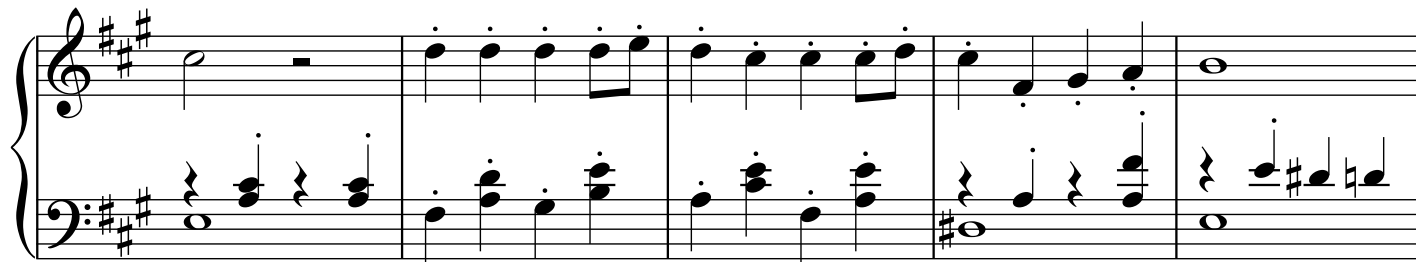
70



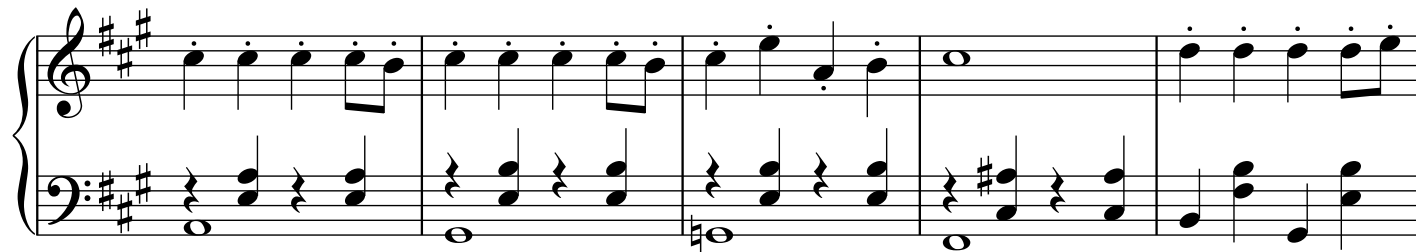
74



79



84



89



94

Measures 94-98 of a piano piece in A major. The right hand features a melodic line with eighth and sixteenth notes, including a trill in measure 96. The left hand provides a steady accompaniment of eighth notes.

99

Measures 99-103 of the piano piece. The right hand continues the melodic development with various intervals and eighth notes. The left hand maintains the eighth-note accompaniment.

104

Measures 104-107 of the piano piece. The right hand has a more active melodic line with many sixteenth notes. The left hand continues with eighth notes, featuring a whole rest in measure 105.

108

Measures 108-111 of the piano piece. The right hand plays a rapid sixteenth-note melody. The left hand accompaniment includes some chords and eighth notes.

112

Measures 112-115 of the piano piece. The right hand continues with a fast sixteenth-note passage. The left hand accompaniment features a mix of eighth and sixteenth notes.

116

Measures 116-119. Treble clef: continuous eighth-note melody. Bass clef: eighth notes and quarter notes.

120

Measures 120-123. Treble clef: continuous eighth-note melody. Bass clef: eighth notes and quarter notes.

124

Measures 124-127. Treble clef: eighth notes with a wavy line. Bass clef: eighth notes.

128

8va

Measures 128-130. Treble clef: eighth notes. Bass clef: eighth notes.

131

(8)

Measures 131-133. Treble clef: eighth notes. Bass clef: eighth notes.