

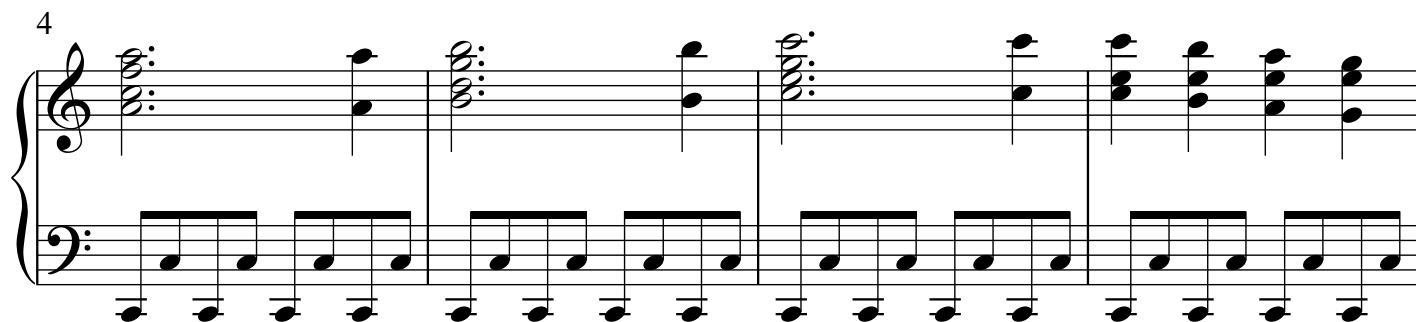


Joy To The World

(Second Version)

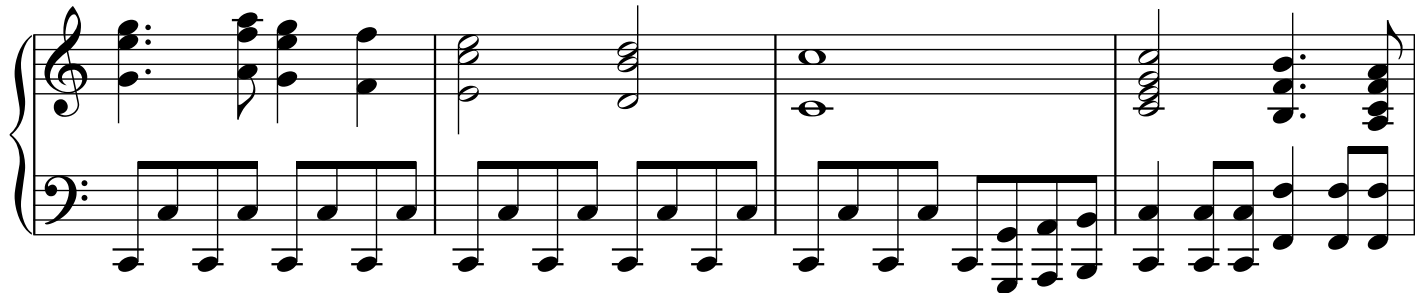
Allegro

Arranged by Polly Bekasova



2

16



20



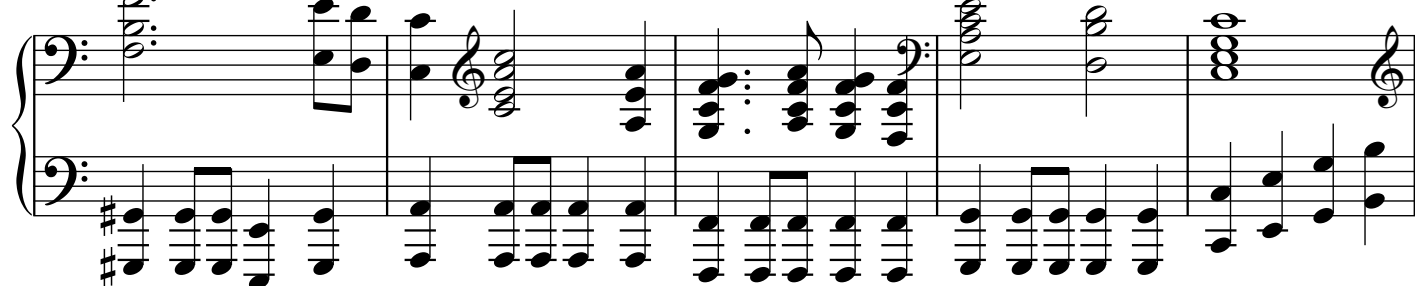
25



29



33



38

Measures 38-42: The right hand plays a continuous eighth-note chordal pattern. The left hand plays a bass line with eighth and quarter notes.

43

Measures 43-47: The right hand continues the eighth-note chordal pattern. The left hand has a half rest in measure 43, then continues with eighth and quarter notes.

48

Measures 48-51: The right hand continues the eighth-note chordal pattern. The left hand continues with eighth and quarter notes.

52

Measures 52-56: The right hand continues the eighth-note chordal pattern. The left hand continues with eighth and quarter notes.

57

Measures 57-61: The right hand continues the eighth-note chordal pattern. The left hand continues with eighth and quarter notes. The piece ends with a double bar line and repeat signs.

62

This system contains measures 62 through 66. The key signature is two sharps (F# and C#). The right hand features a melody with eighth and sixteenth notes, often beamed together, and includes some triplets. The left hand provides a steady accompaniment with eighth notes and chords. Measure 66 ends with a repeat sign.

67

This system contains measures 67 through 71. The right hand continues the melodic line with various rhythmic patterns, including eighth and sixteenth notes. The left hand maintains the accompaniment. Measure 71 ends with a repeat sign.

72

This system contains measures 72 through 76. The right hand has a more active melody with many beamed sixteenth notes. The left hand continues with eighth-note accompaniment. Measure 76 ends with a repeat sign.

77

This system contains measures 77 through 80. The right hand features a melody with dotted rhythms and eighth notes. The left hand continues the accompaniment. Measure 80 ends with a repeat sign.

80

This system contains measures 81 through 83. The right hand has a sustained chord in the first measure, followed by rests. The left hand continues with eighth-note accompaniment. The system concludes with a double bar line.