



Just A Closer Walk With Thee

(Advanced Piano)

1
Arranged by
Ivan Lohvin

8^{va}

3

6

10

14

The image displays a piano score for the hymn 'Just A Closer Walk With Thee', arranged by Ivan Lohvin for advanced piano. The score is written in 4/4 time with a key signature of two flats (B-flat and E-flat). It consists of five systems of music, each with a measure number (1, 3, 6, 10, 14) at the beginning. The first system includes an 8^{va} (octave) marking above the treble staff. The notation features a variety of musical elements including eighth and sixteenth notes, chords, and rests. The bass line is primarily composed of chords and eighth notes, while the treble line contains more complex melodic and harmonic patterns, including some sixteenth-note runs. The score concludes with a final chord in the fifth system.

18

Measures 18-21 of a piano piece in B-flat major. Measure 18 features a treble staff with a half note G4, a quarter note A4, and a half note Bb4, with a whole note chord of G4-Bb4 in the bass. Measure 19 has a treble staff with a half note G4, a quarter note A4, and a half note Bb4, with a whole note chord of G4-Bb4 in the bass. Measure 20 has a treble staff with a half note G4, a quarter note A4, and a half note Bb4, with a whole note chord of G4-Bb4 in the bass. Measure 21 has a treble staff with a half note G4, a quarter note A4, and a half note Bb4, with a whole note chord of G4-Bb4 in the bass.

22

Measures 22-24 of a piano piece in B-flat major. Measure 22 features a treble staff with a half note G4, a quarter note A4, and a half note Bb4, with a whole note chord of G4-Bb4 in the bass. Measure 23 has a treble staff with a half note G4, a quarter note A4, and a half note Bb4, with a whole note chord of G4-Bb4 in the bass. Measure 24 has a treble staff with a half note G4, a quarter note A4, and a half note Bb4, with a whole note chord of G4-Bb4 in the bass.

25

Measures 25-27 of a piano piece in B-flat major. Measure 25 features a treble staff with a half note G4, a quarter note A4, and a half note Bb4, with a whole note chord of G4-Bb4 in the bass. Measure 26 has a treble staff with a half note G4, a quarter note A4, and a half note Bb4, with a whole note chord of G4-Bb4 in the bass. Measure 27 has a treble staff with a half note G4, a quarter note A4, and a half note Bb4, with a whole note chord of G4-Bb4 in the bass.

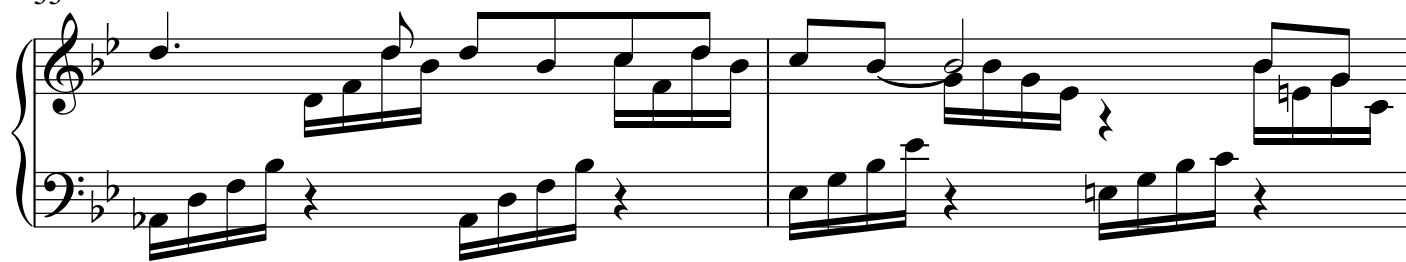
28

Measures 28-30 of a piano piece in B-flat major. Measure 28 features a treble staff with a half note G4, a quarter note A4, and a half note Bb4, with a whole note chord of G4-Bb4 in the bass. Measure 29 has a treble staff with a half note G4, a quarter note A4, and a half note Bb4, with a whole note chord of G4-Bb4 in the bass. Measure 30 has a treble staff with a half note G4, a quarter note A4, and a half note Bb4, with a whole note chord of G4-Bb4 in the bass.

31

Measures 31-33 of a piano piece in B-flat major. Measure 31 features a treble staff with a half note G4, a quarter note A4, and a half note Bb4, with a whole note chord of G4-Bb4 in the bass. Measure 32 has a treble staff with a half note G4, a quarter note A4, and a half note Bb4, with a whole note chord of G4-Bb4 in the bass. Measure 33 has a treble staff with a half note G4, a quarter note A4, and a half note Bb4, with a whole note chord of G4-Bb4 in the bass.

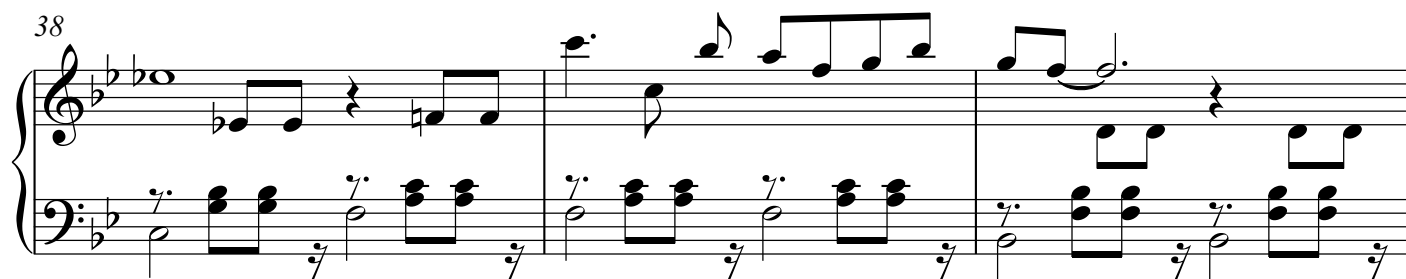
33



35



38



41



44



47

Measures 47-49. Treble clef: Measure 47 has eighth-note and quarter-note patterns. Measure 48 has a quarter note followed by a half note and a quarter rest. Measure 49 has eighth-note and quarter-note patterns. Bass clef: Measures 47-49 feature chords with grace notes (z) on the first and third notes.

50

Measures 50-53. Treble clef: Measure 50 has eighth-note and quarter-note patterns. Measure 51 has eighth-note and quarter-note patterns. Measure 52 has a half note and a quarter note. Measure 53 has a half note and a quarter note. Bass clef: Measures 50-53 feature chords with grace notes (z) on the first and third notes.

54

Measures 54-58. Treble clef: Measure 54 has a half note and a quarter note. Measure 55 has a half note and a quarter note. Measure 56 has a half note and a quarter note. Measure 57 has a half note and a quarter note. Measure 58 has a half note and a quarter note. Bass clef: Measures 54-58 feature chords.

59

Measures 59-61. Treble clef: Measure 59 has a half note and a quarter note. Measure 60 has a half note and a quarter note. Measure 61 has a half note and a quarter note. Bass clef: Measures 59-61 feature chords. A slur labeled *8va* covers measures 60 and 61.

62

Measures 62-64. Treble clef: Measure 62 has eighth-note and quarter-note patterns. Measure 63 has eighth-note and quarter-note patterns. Measure 64 has eighth-note and quarter-note patterns. Bass clef: Measures 62-64 feature eighth-note and quarter-note patterns.