



Rondo

Michael Kravchuk

Op. 7

Allegro

Measures 1-5 of the Rondo. The piece is in 2/4 time with a key signature of one sharp (F#). The melody in the right hand features eighth and sixteenth notes, while the left hand provides a steady accompaniment of eighth notes.

Measures 6-10 of the Rondo. Measure 6 includes a fermata over the first two notes. A repeat sign appears at the end of measure 9, leading to a double bar line at the start of measure 11.

Measures 11-14 of the Rondo. The melody continues with eighth and sixteenth notes, and the left hand accompaniment remains consistent.

Measures 15-19 of the Rondo. The piece continues with the same melodic and harmonic patterns in the right and left hands.

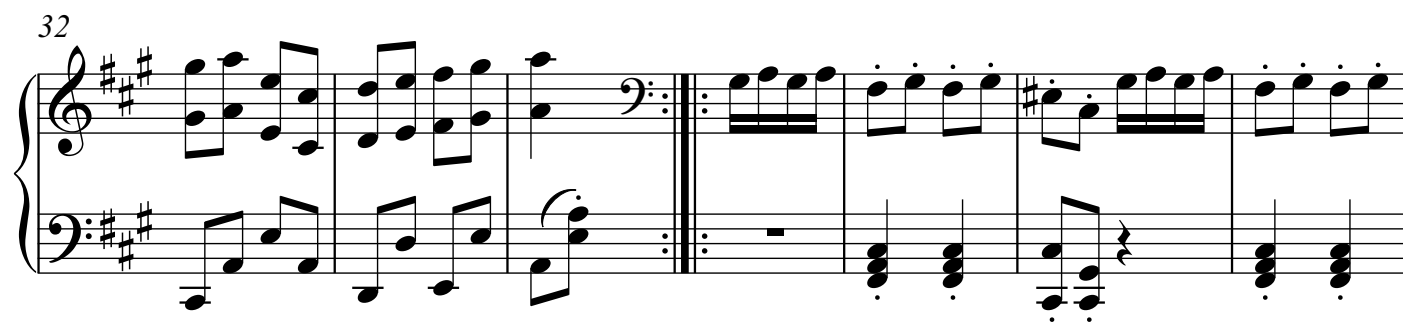
Measures 20-24 of the Rondo. Measure 20 begins with a key signature change to one flat (Bb). The piece concludes with a final double bar line and a key signature change to two sharps (D major) in measure 24.

26



System 1 (Measures 26-31): Treble and Bass staves in A major. Measure 26 has a repeat sign. Measures 27-31 feature a melody in the treble staff and a bass line in the bass staff.

32



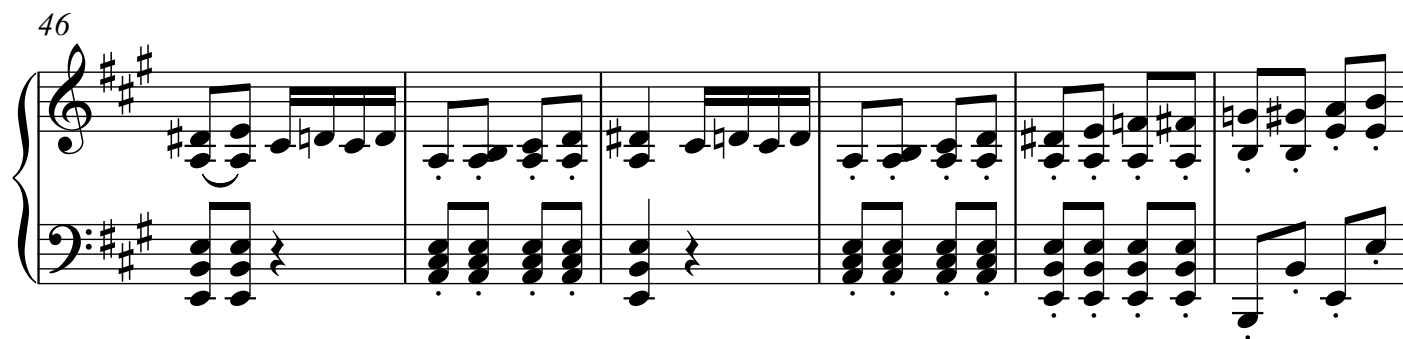
System 2 (Measures 32-38): Treble and Bass staves in A major. Measure 32 has a repeat sign. Measures 33-38 feature a melody in the treble staff and a bass line in the bass staff.

39



System 3 (Measures 39-45): Treble and Bass staves in A major. Measure 39 has a repeat sign. Measures 40-45 feature a melody in the treble staff and a bass line in the bass staff.

46



System 4 (Measures 46-51): Treble and Bass staves in A major. Measure 46 has a repeat sign. Measures 47-51 feature a melody in the treble staff and a bass line in the bass staff.

52

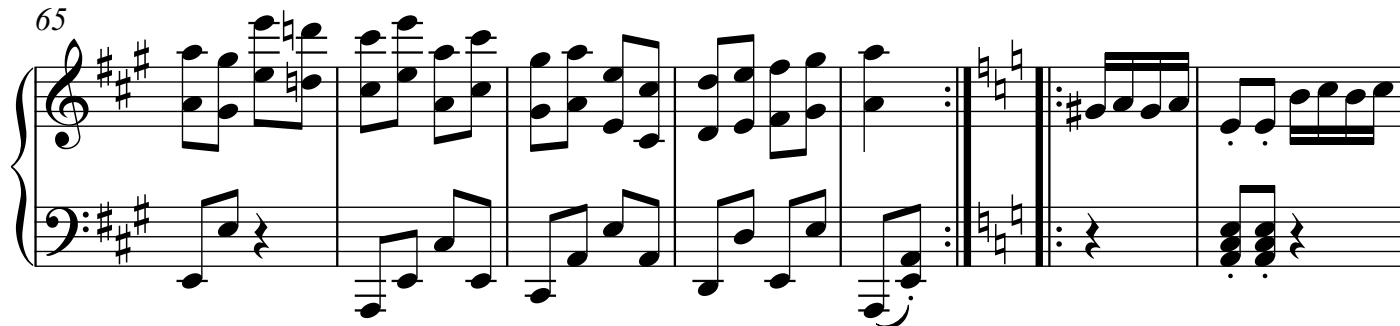


System 5 (Measures 52-57): Treble and Bass staves in A major. Measure 52 has a repeat sign. Measures 53-57 feature a melody in the treble staff and a bass line in the bass staff.

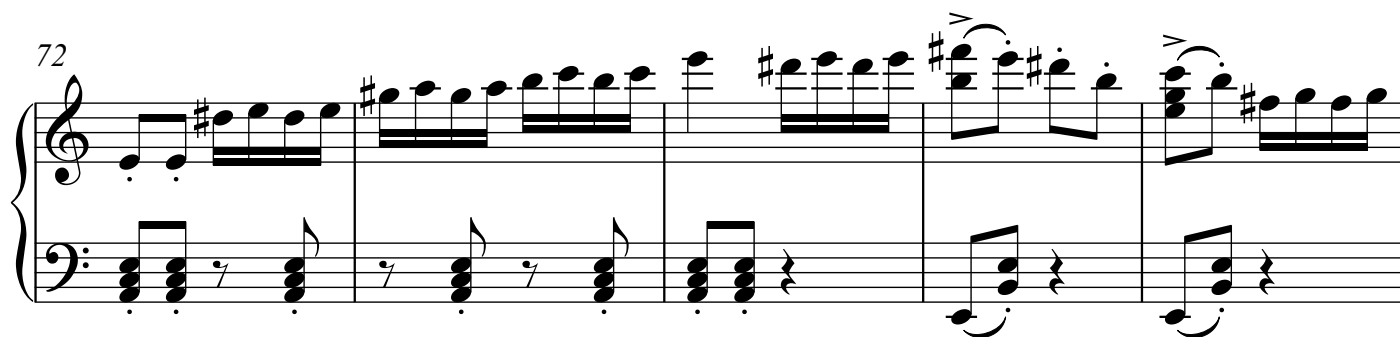
58



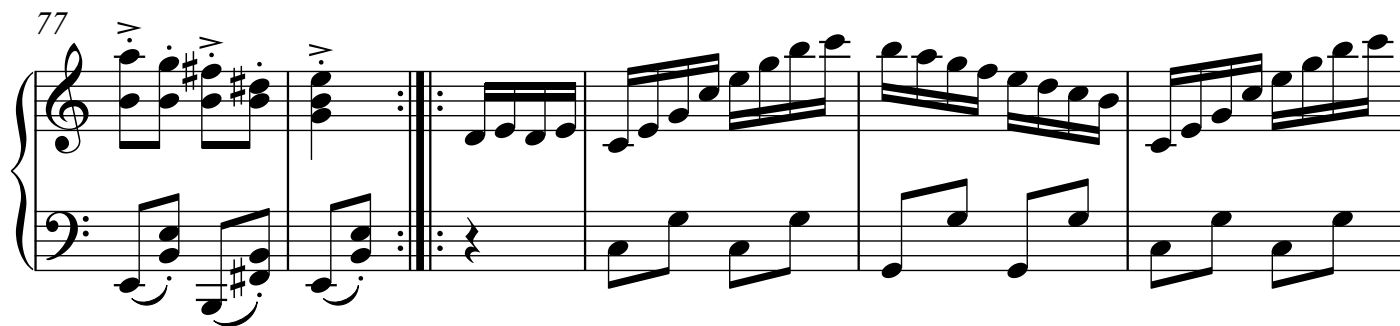
65



72



77



83



87

92

97

101

107

114

8va--| 8va| 8va--|

121

8va--| 8va--| 8va--| 8va--|

128

8va| 8va--| 8va--| 8va--|

135

8va--| 8va--| 8va--| 8va--|

139

8va--| 8va--| 8va--| 8va--|