

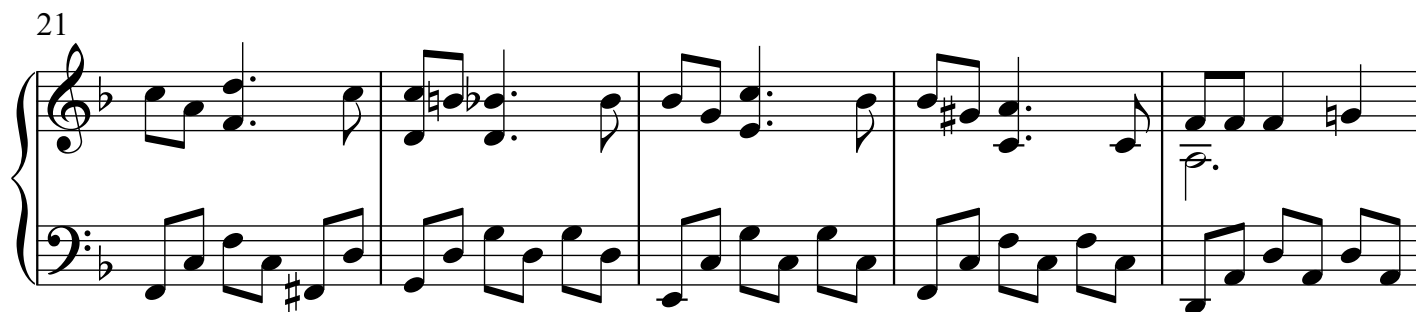
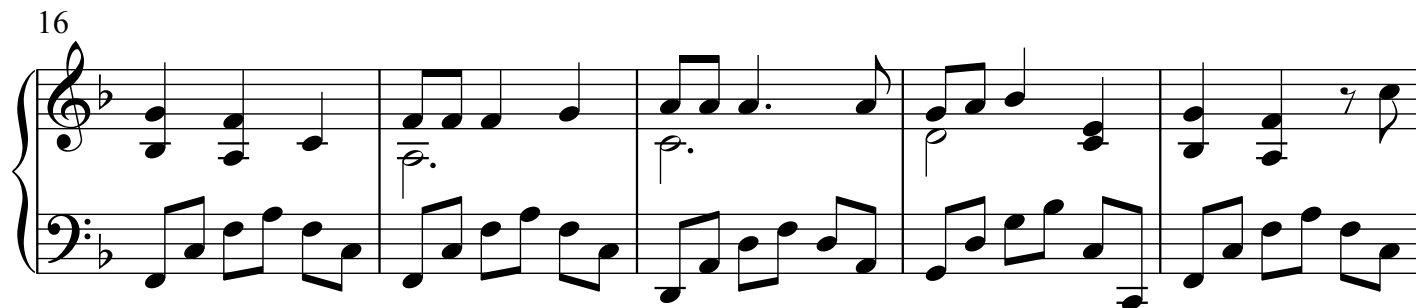
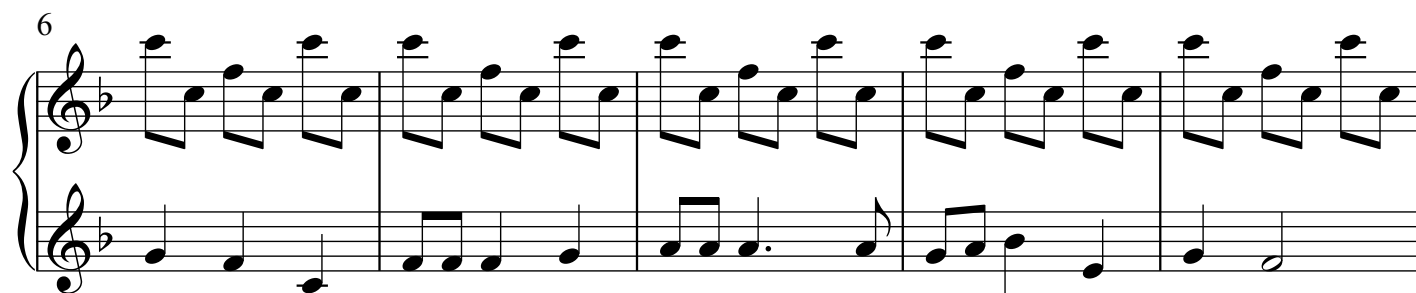
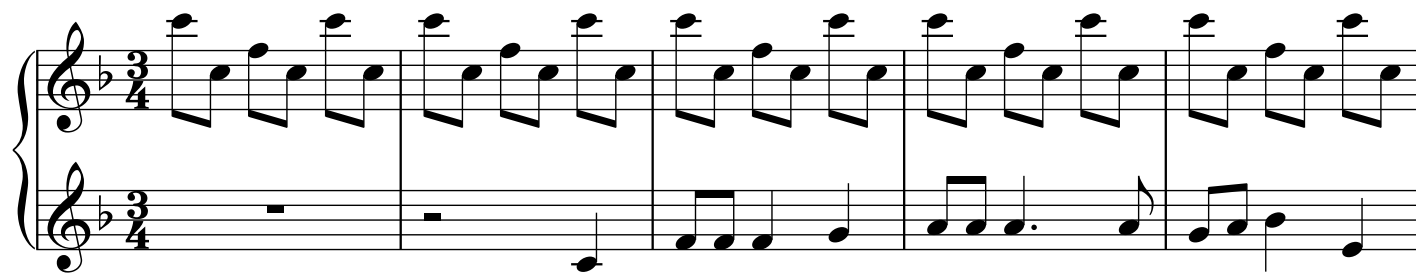


O Christmas Tree

(First Version)

Arranged by Polly Bekasova

Allegretto



2
26

31

36

41

46

51

Measures 51-55: The right hand plays a repeating eighth-note pattern with chords (F#4, A4, B4, C5). The left hand plays a simple bass line (F#2, A2, B2, C3).

56

Measures 56-58: The right hand continues the eighth-note pattern. The left hand plays a new bass line (F#2, A2, B2, C3).

59

Measures 59-61: The right hand continues the eighth-note pattern. The left hand continues the bass line (F#2, A2, B2, C3).

62

Measures 62-64: The right hand continues the eighth-note pattern. The left hand continues the bass line (F#2, A2, B2, C3).

65

Measures 65-68: The right hand plays a descending eighth-note pattern (F#4, E4, D4, C4). The left hand plays a simple bass line (F#2, A2, B2, C3). The piece ends with a double bar line. The word *rit.* is written above the staff in measure 67.