

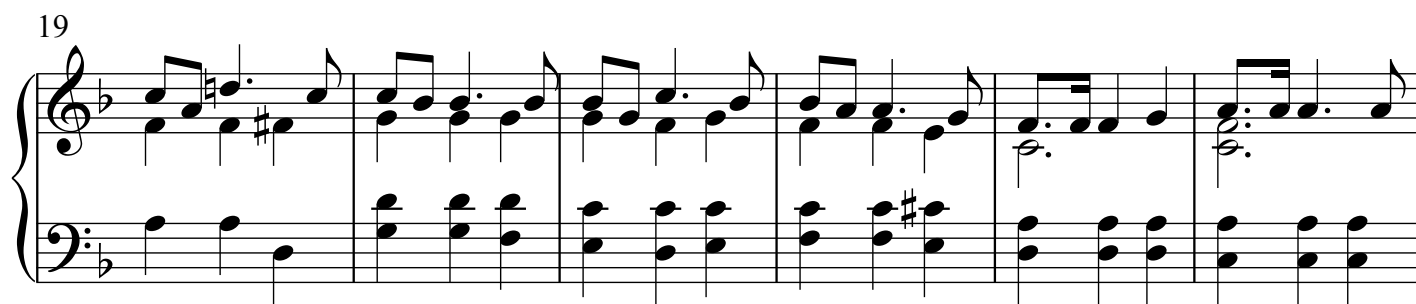
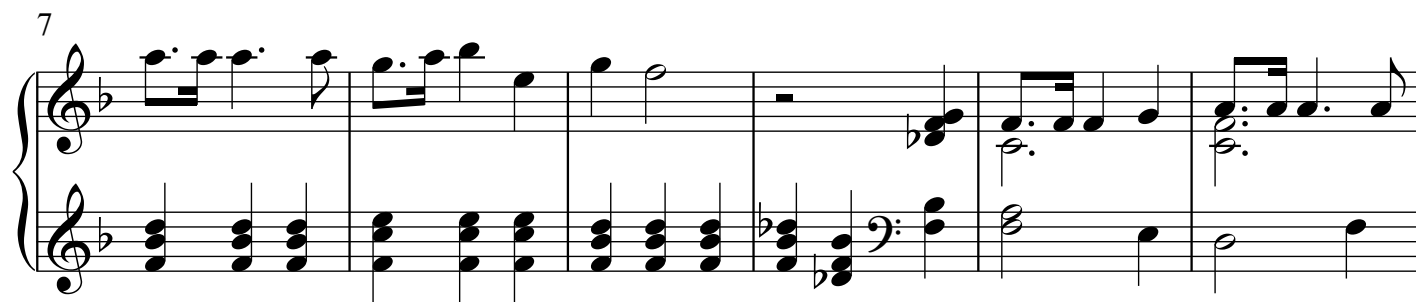


O Christmas Tree

(Second Version)

Arranged by Polly Bekasova

Allegretto



31

This system contains measures 31 through 36. The key signature has one flat (B-flat). The right hand features a series of chords, mostly triads and dyads, with some sixths. The left hand provides a rhythmic accompaniment with eighth and sixteenth notes, often in a descending or ascending pattern.

37

This system contains measures 37 through 42. The key signature remains one flat. The right hand continues with chordal textures, including some dyads and triads. The left hand maintains its accompaniment pattern, with some measures featuring more complex rhythmic figures.

43

This system contains measures 43 through 48. The key signature changes to two sharps (F# and C#). The right hand has more complex chordal structures, including some chords with more than three notes. The left hand continues with its accompaniment, featuring some measures with multiple beamed notes.

49

This system contains measures 49 through 54. The key signature remains two sharps. The right hand features a mix of chords and some melodic fragments. The left hand continues with its accompaniment, including some measures with multiple beamed notes.

55

This system contains measures 55 through 60. The key signature remains two sharps. The right hand has some chords and melodic lines. The left hand continues with its accompaniment, including some measures with multiple beamed notes. The system ends with a double bar line.