



# O Little Town Of Bethlehem

(Second Version)

Arranged by Polly Bekasova

**Allegro**

First system of the piano arrangement, measures 1-6. The music is in 4/4 time, B-flat major, and features a melody in the right hand and a rhythmic accompaniment in the left hand.

Second system of the piano arrangement, measures 7-11. The melody continues in the right hand, and the left hand provides a steady accompaniment.

Third system of the piano arrangement, measures 12-16. The melody moves to the left hand in measure 12, while the right hand provides a rhythmic accompaniment.

Fourth system of the piano arrangement, measures 17-21. The melody returns to the right hand, and the left hand continues with a rhythmic accompaniment.

Fifth system of the piano arrangement, measures 22-26. The melody continues in the right hand, and the left hand provides a rhythmic accompaniment.

2  
27

This system contains measures 27 through 31. The treble clef staff features a melody of eighth and quarter notes, with a final measure containing a whole note chord with a sharp sign. The bass clef staff provides a continuous eighth-note accompaniment.

32

This system contains measures 32 through 36. The treble clef staff continues the melody with eighth and quarter notes. The bass clef staff maintains the eighth-note accompaniment.

37

This system contains measures 37 through 41. The treble clef staff shows more complex melodic movement with some beamed eighth notes. The bass clef staff continues the eighth-note accompaniment.

42

This system contains measures 42 through 46. The treble clef staff features chords and moving lines. The bass clef staff continues the eighth-note accompaniment.

47

This system contains measures 47 through 51. The treble clef staff has a more active melody with eighth notes. The bass clef staff continues the eighth-note accompaniment.

52

Measures 52-56 of a piano piece. The key signature has one flat (B-flat). The right hand features a melody with eighth and quarter notes, including a half note with a fermata in measure 54. The left hand plays a continuous eighth-note accompaniment. Measure 55 contains a double bar line and a key signature change to two sharps (F# and C#).

57

Measures 57-60. The right hand continues the melody, with a half note and a quarter rest in measure 59. The left hand maintains the eighth-note accompaniment.

61

Measures 61-63. The right hand has a whole note chord in measure 61, followed by a half note and a quarter note in measure 62, and a whole note chord in measure 63. The left hand continues the eighth-note accompaniment.

64

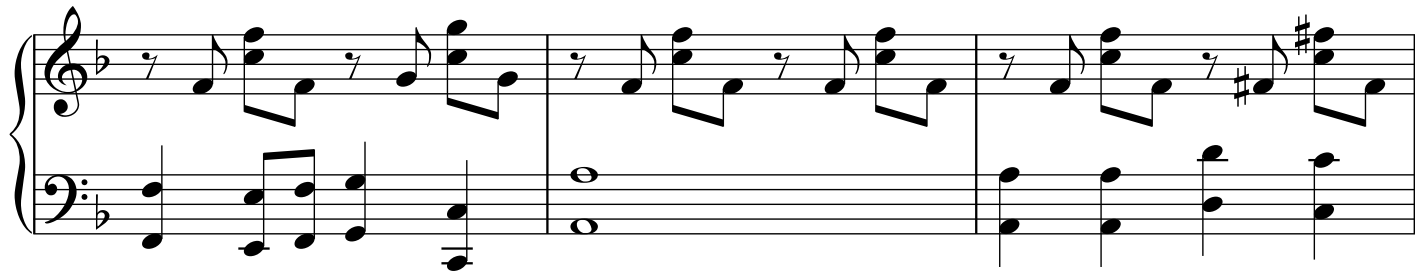
Measures 64-66. The right hand plays a melody of quarter and eighth notes. The left hand continues the eighth-note accompaniment.

67

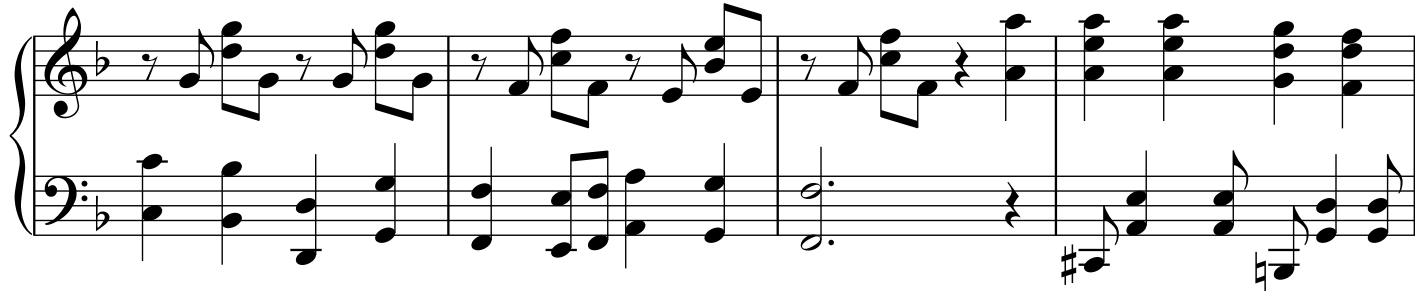
Measures 67-69. The right hand features a melody with eighth notes and rests. The left hand continues the eighth-note accompaniment.

4

70



73



77



81



84

