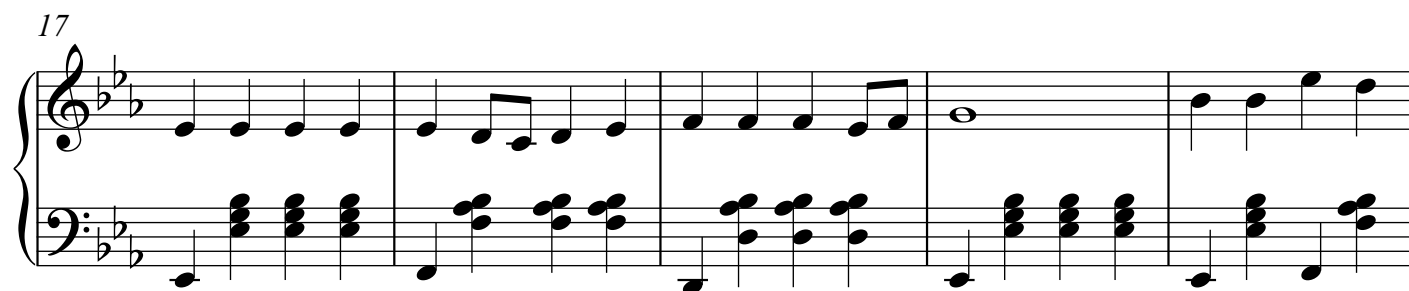
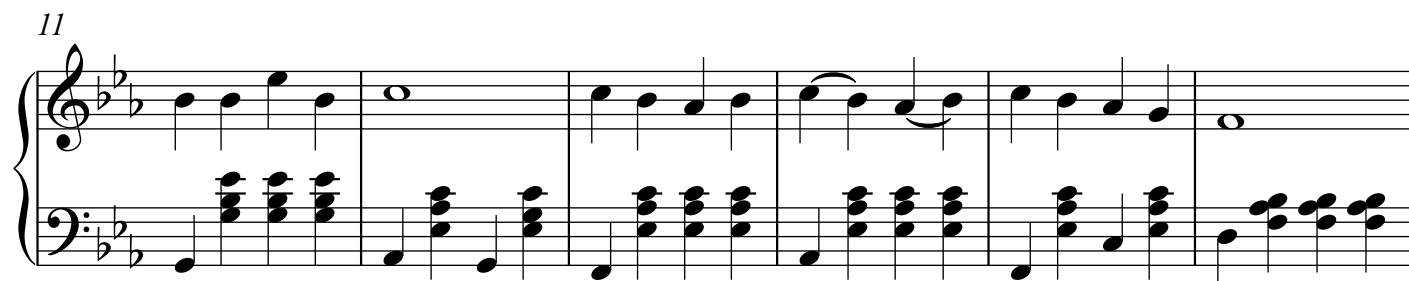




Onward Christian Soldiers

(Advanced Piano)

Arranged by
Ivan Lohvin



27

This system contains measures 27 through 32. The treble clef staff features a melody of eighth and quarter notes, with some measures containing beamed sixteenth notes. The bass clef staff provides a harmonic accompaniment using chords and single notes.

33

This system contains measures 33 through 37. The treble clef staff continues the melodic line with various note values. The bass clef staff maintains the accompaniment pattern.

38

This system contains measures 38 through 42. Measures 38 and 39 feature a melodic flourish in the treble clef with beamed eighth notes. The bass clef accompaniment continues.

43

This system contains measures 43 through 47. The treble clef staff shows a continuation of the melody, ending with a quarter note in measure 47. The bass clef accompaniment is consistent.

48

This system contains measures 48 through 51. Measures 48 and 49 feature a melodic flourish in the treble clef with beamed eighth notes. The bass clef accompaniment continues.

52

Measures 52-55 of a piano piece in B-flat major. The right hand features a continuous eighth-note arpeggiated pattern. The left hand provides harmonic support with chords and single notes.

56

Measures 56-59. The right hand continues the arpeggiated pattern, with a B-flat accidental in measure 57. The left hand accompaniment includes chords and single notes.

60

Measures 60-63. The right hand's arpeggiated pattern continues. The left hand accompaniment includes chords and single notes.

64

Measures 64-67. The right hand's arpeggiated pattern continues. The left hand accompaniment includes chords and single notes.

68

Measures 68-71. The right hand's arpeggiated pattern continues. The left hand accompaniment includes chords and single notes.

72

Measures 72-76 of a piano piece. The key signature has two flats (B-flat and E-flat). Measure 72 features a treble clef with a half note G4 and a bass clef with a half note G2. Measures 73-76 show a series of chords and moving lines in both staves, with the right hand often playing chords and the left hand playing moving eighth notes.

77

Measures 77-81 of a piano piece. The key signature has two flats. Measures 77-81 continue the musical progression with various chordal textures and moving lines in both staves. The right hand frequently plays chords, while the left hand provides a rhythmic and harmonic foundation with moving lines.

82

Measures 82-86 of a piano piece. The key signature has two flats. Measures 82-86 show a continuation of the musical themes, with the right hand playing chords and the left hand playing moving lines. The texture is consistent with the previous measures.

87

Measures 87-91 of a piano piece. The key signature has two flats. Measures 87-91 continue the musical progression, featuring a mix of chordal and moving lines in both staves. The right hand often plays chords, and the left hand plays moving lines.

92

Measures 92-96 of a piano piece. The key signature has two flats. Measures 92-96 show the final measures of this section, with the right hand playing chords and the left hand playing moving lines. The piece concludes with a final chord in measure 96.