



# The Strife Is Over

(Advanced Piano)

Arranged by  
Michael Kravchuk

Measures 1-7 of the piano arrangement. The key signature is two sharps (F# and C#), and the time signature is 3/4. The music features a steady eighth-note accompaniment in the bass and chords in the treble. Measure 7 ends with a fermata over a whole note chord.

Measures 8-14 of the piano arrangement. The eighth-note accompaniment continues. Measure 14 ends with a fermata over a whole note chord.

Measures 15-20 of the piano arrangement. The eighth-note accompaniment continues. Measure 20 ends with a fermata over a whole note chord.

Measures 21-25 of the piano arrangement. Measure 23 features a long, sustained chord in the treble with a fermata. The piece concludes in measure 25 with a final whole note chord in the treble and a fermata.

27

System 1 (Measures 27-32): Treble and Bass staves. Treble staff contains chords and a whole note chord at the end. Bass staff contains chords and a whole note chord at the end. Fingering numbers are present below the bass staff.

33

System 2 (Measures 33-38): Treble staff contains eighth and sixteenth notes. Bass staff contains chords. Fingering numbers are present below the bass staff.

39

System 3 (Measures 39-44): Treble staff contains eighth and sixteenth notes. Bass staff contains chords. Fingering numbers are present below the bass staff.

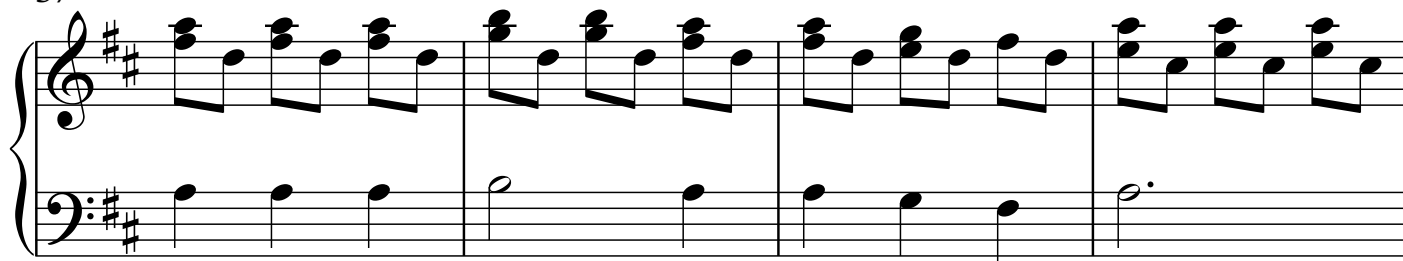
45

System 4 (Measures 45-50): Treble staff contains eighth and sixteenth notes. Bass staff contains chords. Fingering numbers are present below the bass staff.

51

System 5 (Measures 51-56): Treble and Bass staves. Treble staff contains chords and a whole note chord at the end. Bass staff contains chords and a whole note chord at the end. Fingering numbers are present below the bass staff.

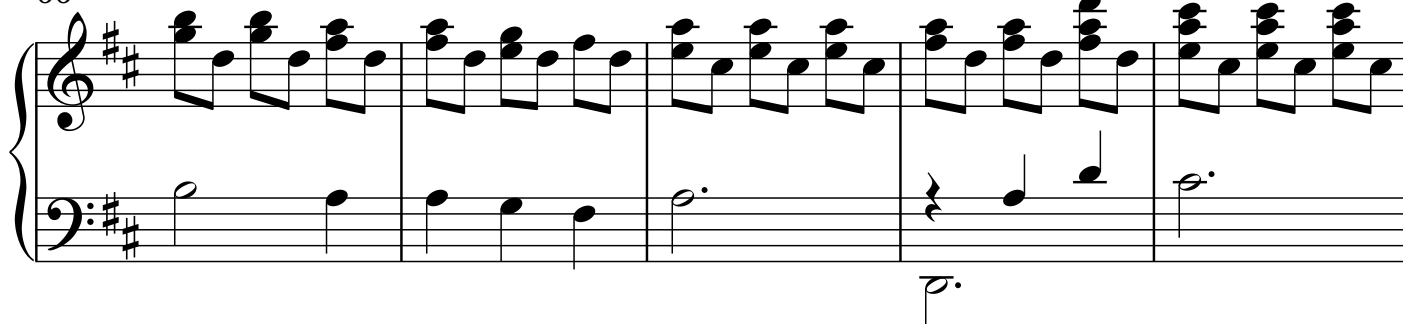
57



61



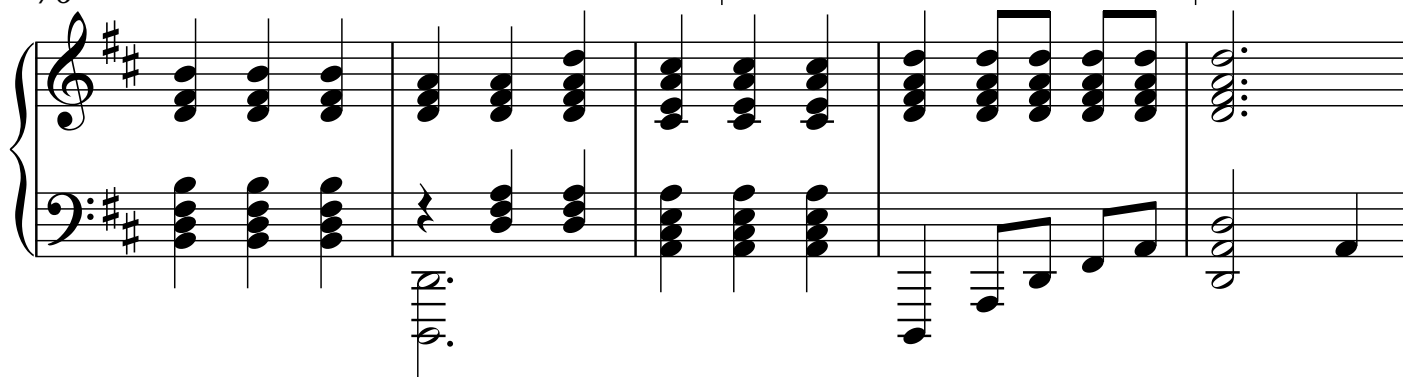
66



71



76



81

System 1, measures 81-85. The key signature is two sharps (F# and C#). The music features a complex texture with many beamed sixteenth notes in both hands, creating a dense, rhythmic pattern. There are several rests and dynamic markings throughout the system.

86

System 2, measures 86-90. The music continues with a similar rhythmic intensity, featuring many beamed sixteenth notes and some rests. The texture remains dense and complex.

91

System 3, measures 91-96. This system introduces more melodic movement in the right hand, with some eighth and sixteenth notes. The left hand continues with dense sixteenth-note patterns. There are some rests and dynamic markings.

97

System 4, measures 97-101. The music features a lot of beamed sixteenth notes in both hands, creating a very dense texture. There are some rests and dynamic markings.

102

System 5, measures 102-106. The music concludes with a final system featuring a mix of beamed sixteenth notes and some melodic lines. A dynamic marking of *8va* is present in the right hand. The system ends with a double bar line.