

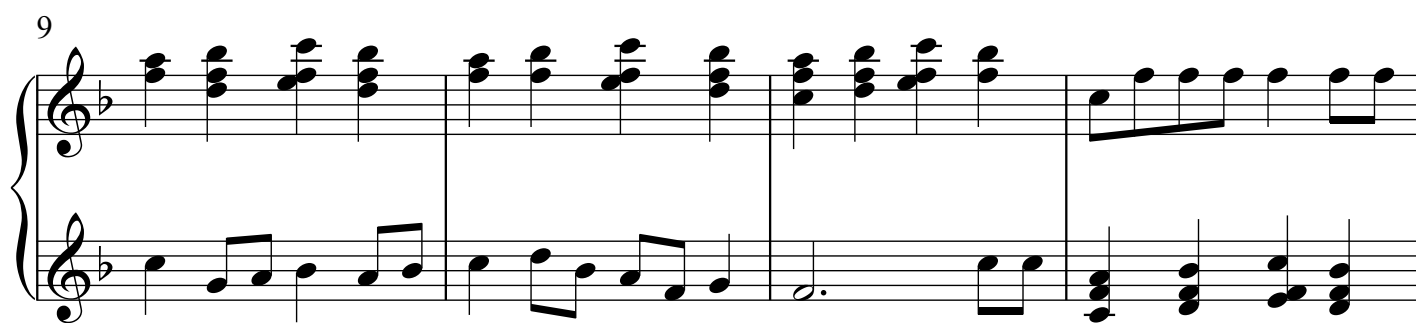


# Twelve Days Of Christmas

(First Version)

Arranged by Polly Bekasova

**Allegretto**



2

18



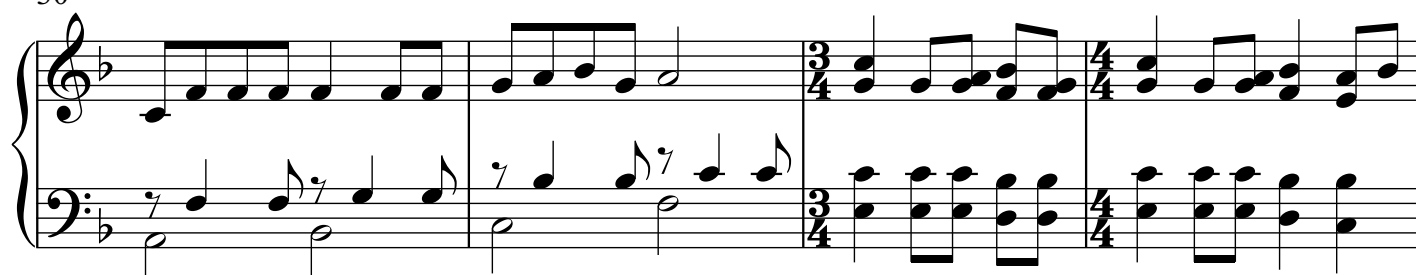
22



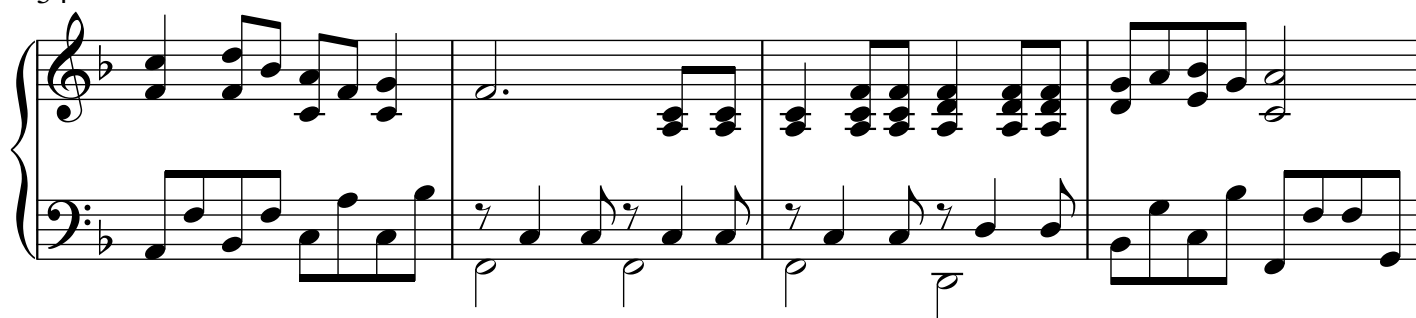
26



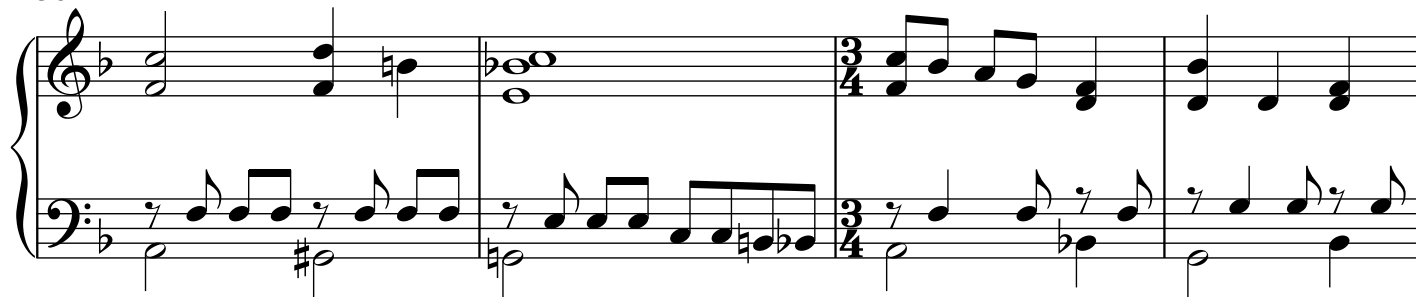
30



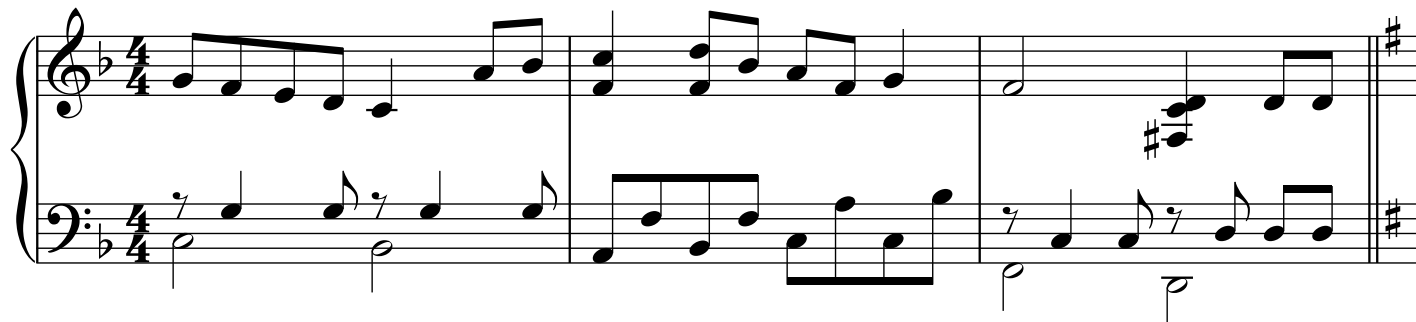
34



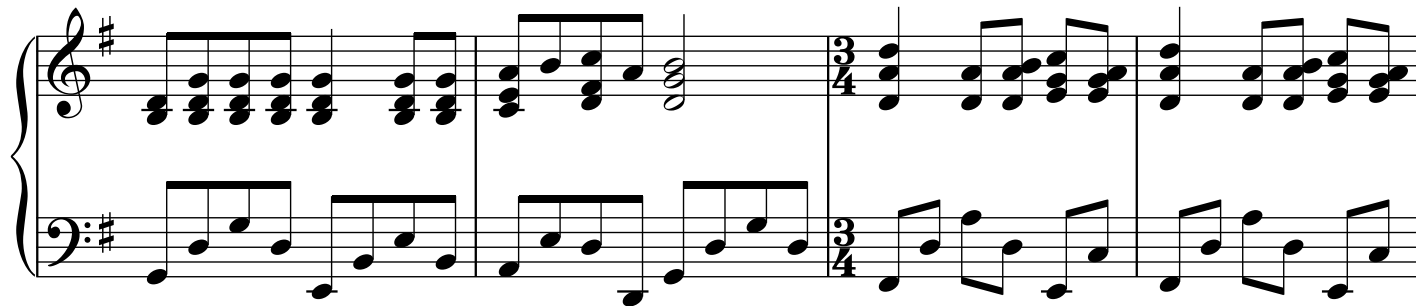
38



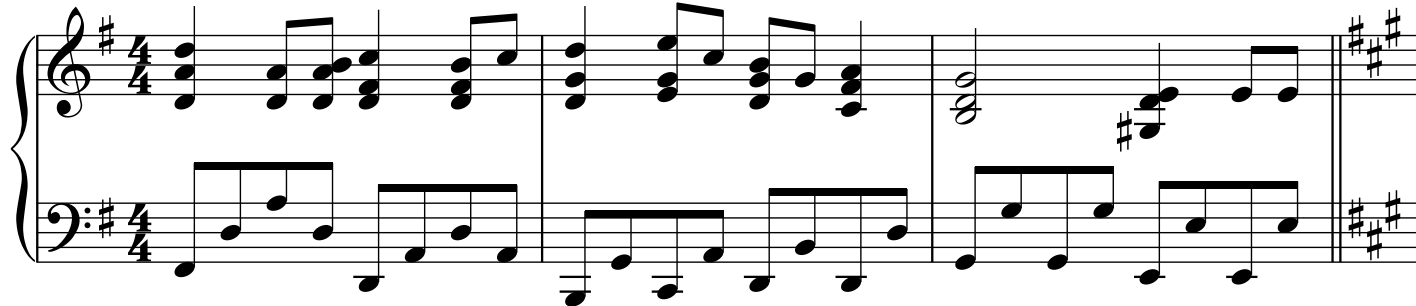
42



45



49



4

52

Measures 52-55 of a musical score in A major (three sharps). The time signature is 3/4. The piece features a complex texture with many beamed sixteenth notes in both the treble and bass staves. Measure 55 ends with a double bar line.

56

Measures 56-59 of a musical score in A major. The time signature changes from 3/4 to 4/4 at measure 57. The texture continues with beamed sixteenth notes and chords. Measure 59 ends with a double bar line.

60

Measures 60-62 of a musical score in A major. The time signature is 4/4. The texture is simpler, featuring sustained chords in the treble and a steady eighth-note bass line. Measure 62 ends with a double bar line.

63

Measures 63-65 of a musical score in A major. The time signature is 4/4. The texture is similar to the previous system, with sustained chords and a steady eighth-note bass line. Measure 65 ends with a double bar line.