



# Twelve Days Of Christmas

(Second Version)

Arranged by Polly Bekasova

**Allegro**

Measures 1-5 of the piano arrangement. The right hand features a continuous eighth-note melody in G-flat major, while the left hand provides a steady bass line with eighth notes.

Measures 6-11. The right hand continues the eighth-note melody. The left hand introduces a more complex bass line with dotted rhythms and a half-note melody in measures 10 and 11.

Measures 12-16. The right hand continues the eighth-note melody. The left hand features a steady bass line with eighth notes, including a triplet in measure 12.

Measures 17-20. The right hand continues the eighth-note melody. The left hand features a steady bass line with eighth notes.

Measures 21-24. The right hand continues the eighth-note melody. The left hand features a steady bass line with eighth notes. The piece concludes with a final chord in measure 24.

2  
25

Measures 25-27 of a piano piece in B-flat major, 4/4 time. The right hand features a melodic line with eighth and quarter notes, while the left hand provides a harmonic accompaniment with chords and single notes.

28

Measures 28-30 of the piano piece. The right hand continues the melodic development with some sixteenth-note passages, and the left hand maintains a steady accompaniment.

31

Measures 31-34 of the piano piece. This section includes a key signature change to C major (removal of B-flat) and a time signature change to 3/4 time for measures 31 and 32, returning to 4/4 for measures 33 and 34.

35

Measures 35-38 of the piano piece. The right hand features a more active melodic line with eighth-note patterns, and the left hand provides a supportive accompaniment.

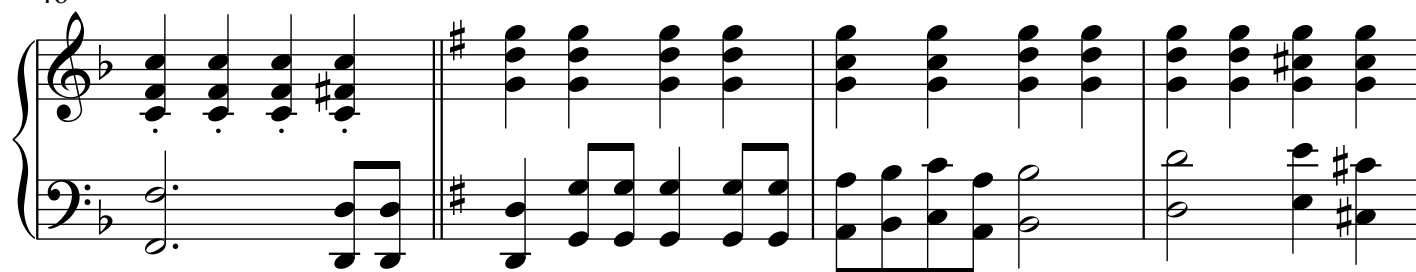
39

Measures 39-41 of the piano piece. The right hand continues with a melodic line, and the left hand provides a harmonic accompaniment.

42



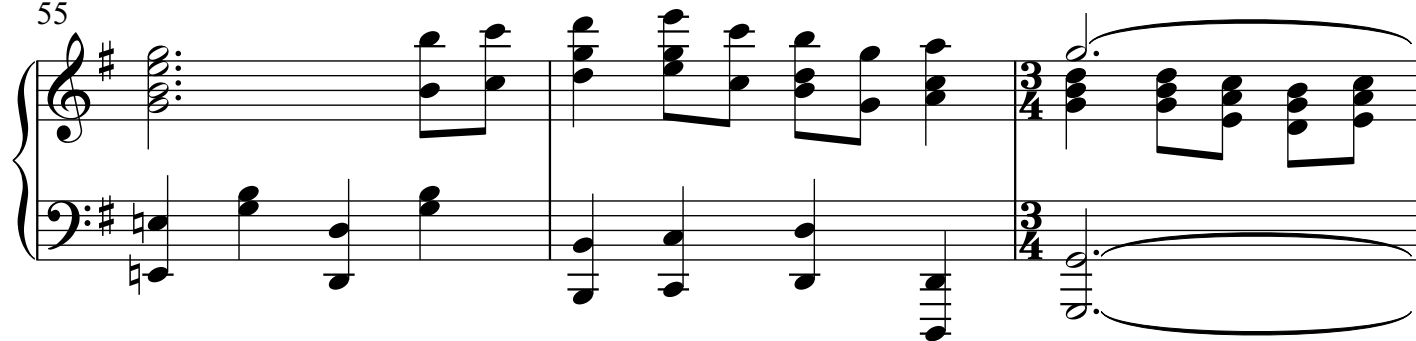
46



50



55



58

