



Were You There

(Advanced Piano)

1
Arranged by
Michael Kravchuk

Measures 1-4 of the piano arrangement. The key signature is two sharps (F# and C#), and the time signature is 4/4. The right hand plays a melody starting on D5, while the left hand provides a harmonic accompaniment with chords and single notes. A red oval highlights a specific chord in the left hand in measure 4.

5

Measures 5-8 of the piano arrangement. The right hand continues the melody with eighth and quarter notes. The left hand plays a steady eighth-note accompaniment.

9

Measures 9-12 of the piano arrangement. The right hand features a more active melody with eighth notes and some beamed sixteenth notes. The left hand continues with a consistent eighth-note accompaniment.

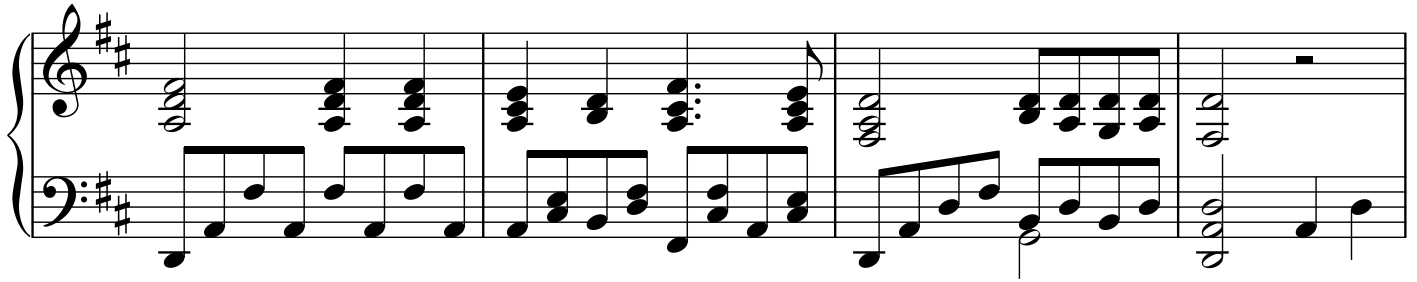
13

Measures 13-16 of the piano arrangement. The right hand plays a series of chords and dyads. The left hand continues with a steady eighth-note accompaniment.

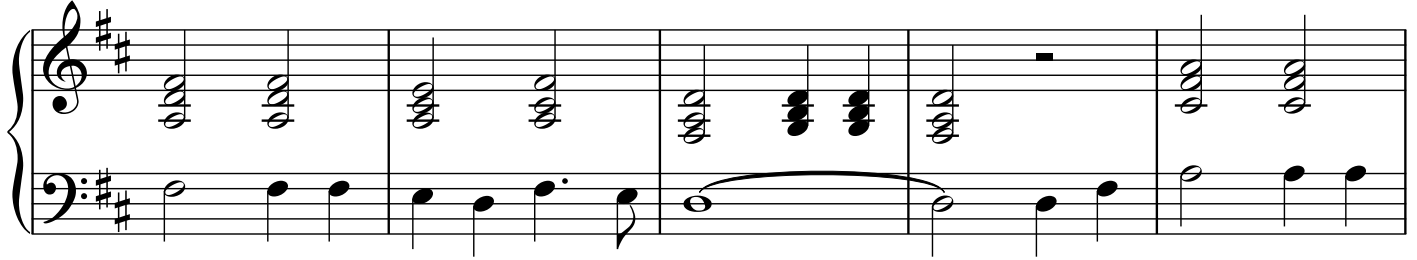
17

Measures 17-20 of the piano arrangement. The right hand plays chords and dyads. The left hand continues with a steady eighth-note accompaniment, ending with a final chord in measure 20.

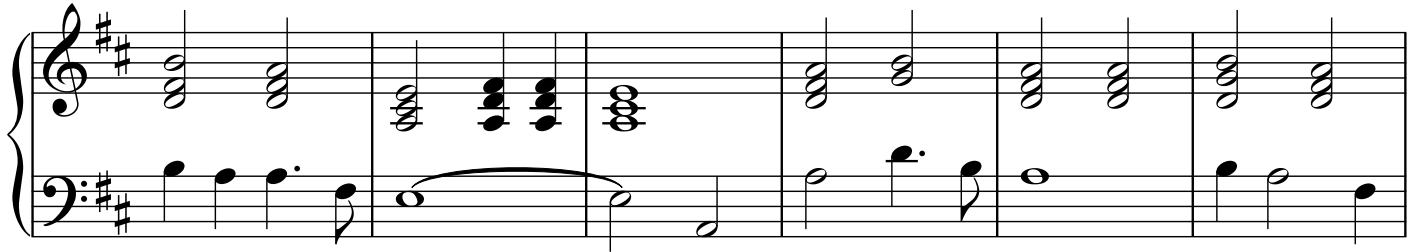
21



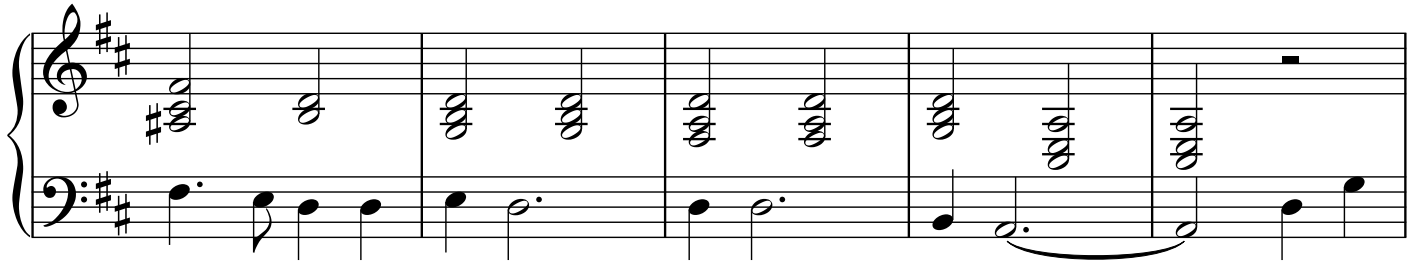
25



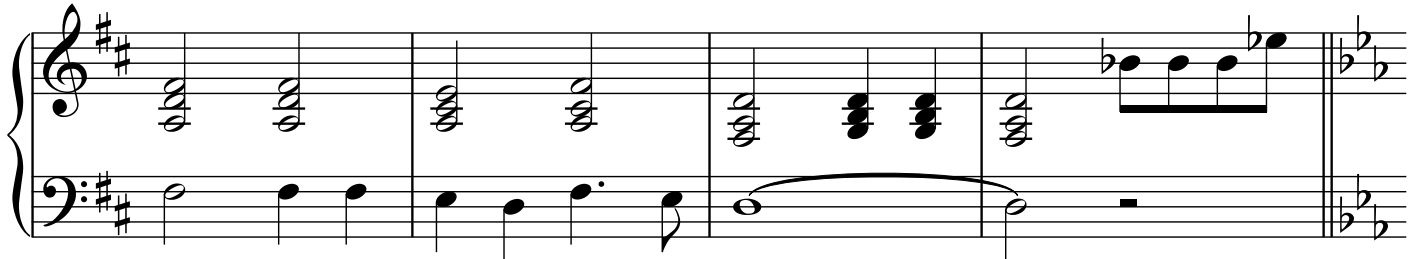
30



36



41



45

Measures 45-48 of a piano piece in B-flat major. The right hand features a continuous eighth-note pattern, while the left hand plays a steady eighth-note accompaniment. The key signature has two flats (B-flat and E-flat).

49

Measures 49-52 of the piano piece. The right hand continues with eighth-note patterns, and the left hand maintains the eighth-note accompaniment. The key signature remains B-flat major.

53

Measures 53-56 of the piano piece. The right hand's eighth-note pattern becomes more complex, incorporating some beamed sixteenth notes. The left hand continues with the eighth-note accompaniment. The key signature remains B-flat major.

57

Measures 57-60 of the piano piece. The right hand's eighth-note pattern continues, with some notes beamed together. The left hand maintains the eighth-note accompaniment. The key signature remains B-flat major.

61

Measures 61-64 of the piano piece. The right hand's eighth-note pattern continues, with some notes beamed together. The left hand maintains the eighth-note accompaniment. The key signature remains B-flat major.

65

Measures 65-70 of a piano piece in B-flat major. The right hand features a melodic line with a long, expressive slur over measures 66-67, followed by a series of chords and a final flourish. The left hand provides a steady accompaniment with chords and single notes.

70

Measures 70-75 of a piano piece in B-flat major. The right hand continues the melodic development with a long, expressive slur over measures 71-72, followed by a series of chords and a final flourish. The left hand provides a steady accompaniment with chords and single notes.

75

Measures 75-80 of a piano piece in B-flat major. The right hand features a melodic line with a long, expressive slur over measures 76-77, followed by a series of chords and a final flourish. The left hand provides a steady accompaniment with chords and single notes.

80

Measures 80-85 of a piano piece in B-flat major. The right hand features a melodic line with a long, expressive slur over measures 81-82, followed by a series of chords and a final flourish. The left hand provides a steady accompaniment with chords and single notes.